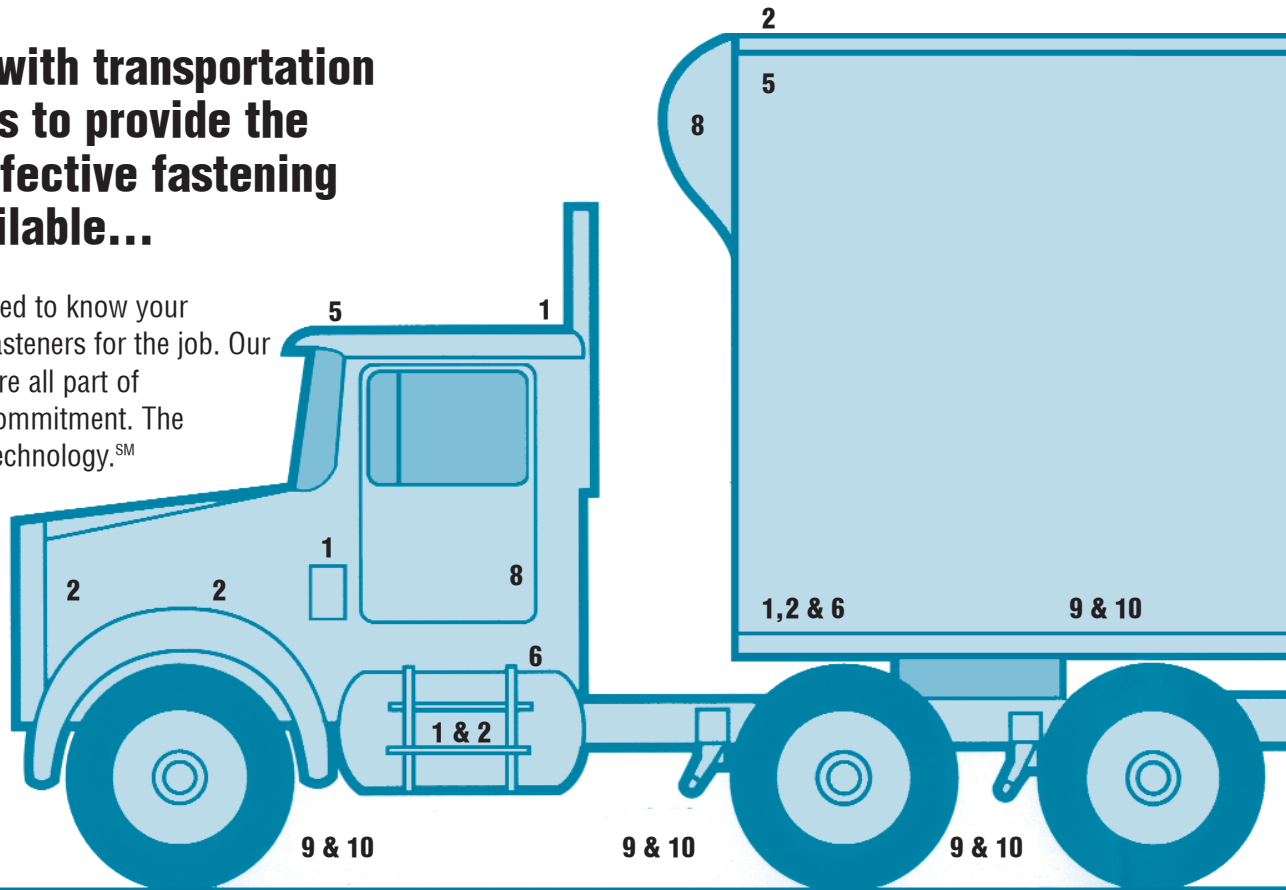

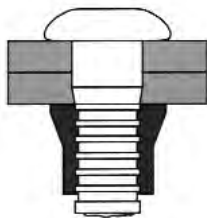
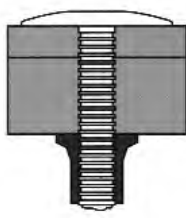
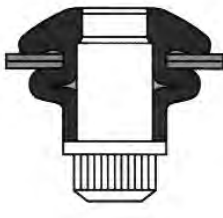
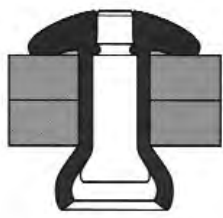


Huck works with transportation professionals to provide the most cost effective fastening systems available...

Huck people are trained to know your needs and the right fasteners for the job. Our product and people are all part of the Huck customer commitment. The future of Fastening Technology.SM Only from Huck.

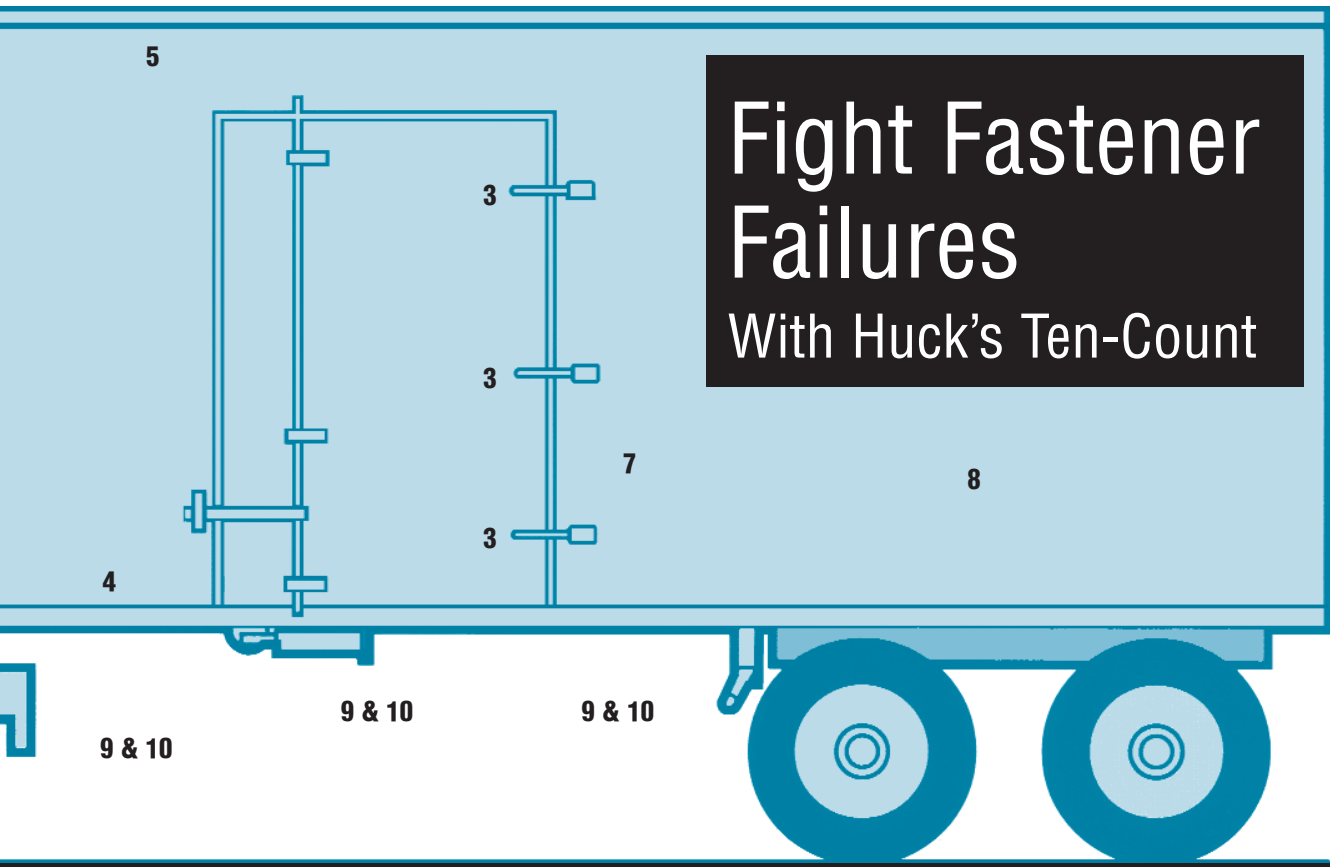


1	2	3	4	5
Huck Fasteners				
<p>The Magna-Grip fastener provides a strong rattle resistant, wide grip range. Spec them for lower rub rails, steps, roof caps, side sheets and cab assembly.</p> 	<p>The C6L fastener, made in aluminum, carbon steel gives you a high consistent, non-loosening clamp. Ideal for corner castings, drip mountings, fender attachments, back and side assembly, radiator mountings and steps. Available in a stainless clad head for rust-free service (production quantities only).</p> 	<p>The MGP-30 is a metal-to-metal low profile fastener effective for tamper resistant trailer door assembly.</p> 	<p>The Magna-Bulb is especially suited to high-volume and automatic installations involving thin or low-strength materials such as plastic, aluminum and fiberglass, as well as repair applications in out-of-round holes.</p> 	<p>A blind side fastener for sheet metal with circle-seal lock that makes it vibration resistant. Available in aluminum, carbon and stainless steel, the Magna-Lok fastener is designed for roof caps, side sheets, corner castings, roof liners and warning light assembly.</p> 
Magna-Grip® Fastener	C6L Fastener	MGP-30 Fastener	Magna-Bulb® Fastener	Magna-Lok® Fastener

To Order Call: 708-447-4500 or Outside Illinois 800-837-8707



Fight Fastener Failures With Huck's Ten-Count



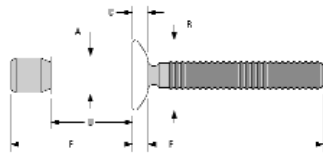
6	7	8	9	10
Huck Fasteners				
<p>Huck's structural blind oversized fastener for internal frame supports, mounting brackets and doors.</p>	<p>A two piece fastener designed for fiberglass, plastic and metal-clad plywood to metal fastening. Provides a weather-proof, tamper proof uniform clamp.</p>	<p>An advanced water-tight, polymer sealant makes Magna-Tite perfect for oversize holes and repair applications. Its built-in wide grip range and large blind side footprint substantially reduce fastener pull-out for installation in thin or low-strength materials such as aluminum, fiberglass and plastic.</p>	<p>The two piece Grade 8 fastener designed for permanent installation. Handles tough jobs like crossmembers, frame assembly, spring hangers and fifth wheels.</p>	<p>Huck's newest Grade 8 fastener with prealigning fit-up capabilities. Comparable to the HP8 in frames, fifth wheel assembly and engine mounts. The Huck-Fit Fastener offers a removability option.</p>
B.O.M.® Fastener	Hucktainer® Fastener	Magna-Tite® Fastener	HP8® Fastener	Huck-Fit® Fastener



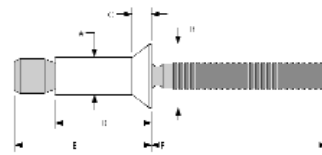
To Order Call: 708-447-4500 or Outside Illinois 800-837-8707

Magna-Lok® LockRite™

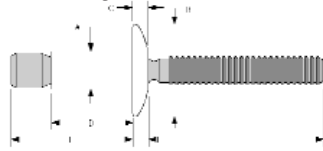
Strong, consistent and reliable. Employing a unique solid-circle lock, the Magna-Lok® fastener creates an internal lock during installation that virtually eliminates pin pushout.



Protruding Head



100° Countersunk Head



Truss Head

Dimensional Data – Protruding Head

DIAM. (NO.)	STEEL	ALUMINUM	STAINLESS	GRIP RANGE	HOLE SIZE	A	B	C	D	E	F
3/16 (6)	MGLP-R6-4*	MGLP-B6-4*	MGLP-U6-4	.062 - .270	.191 - .201	.188	.385	.085	.415	.675	1.00
	MGLP-R6-7*	MGLP-B6-7*	MGLP-U6-7	.214 - .437	.191 - .201	.188	.385	.085	.572	.825	1.00
	MGLP-R6-E*	MGLP-B6-E*		.062 - .437	.191 - .201	.188	.385	.085	.572	.950	1.00
1/4 (8)	MGLP-R8-6*	MGLP-B8-6*	MGLP-U8-6	.080 - .375	.261 - .272	.253	.525	.117	.560	.970	1.00
	MGLP-R8-10*	MGLP-B8-10*	MGLP-U8-10	.350 - .625	.261 - .272	.253	.525	.117	.810	1.220	1.00
	MGLP-R8-E*	MGLP-B8-E*		.080 - .625	.261 - .272	.253	.525	.117	.810	1.405	1.00
3/8 (12)	MGLP-R12-12	MGLP-B12-12		.120 - .560	.392 - .408	.386	.787	.175	.840	1.650	1.545

Dimensional Data – Truss Head

DIAM. (NO.)	STEEL	ALUMINUM	STAINLESS	GRIP RANGE	HOLE SIZE	A	B	C	D	E	F
3/16 (6)	MGLT-R6-4	MGLT-B6-4		.062 - .270	.191 - .201	.187	.500	.085	.415	.675	1.00
	MGLT-R6-7	MGLT-B6-7		.214 - .437	.191 - .201	.187	.500	.085	.572	.825	1.00
	MGLT-R6-E	MGLT-B6-E		.062 - .437	.191 - .201	.187	.500	.085	.572	.950	1.00
1/4 (8)	MGLT-R8-6	MGLT-B8-6		.080 - .375	.261 - .272	.253	.588	.117	.560	.970	1.00
	MGLT-R8-10	MGLT-B8-10		.350 - .625	.261 - .272	.253	.588	.117	.810	1.220	1.00
	MGLT-R8-E	MGLT-B8-E		.080 - .625	.261 - .272	.253	.588	.117	.810	1.405	1.00

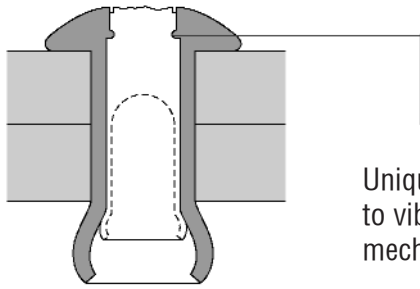
Dimensional Data – 100° Countersunk Head

DIAM. (NO.)	STEEL	ALUMINUM	STAINLESS	GRIP RANGE	HOLE SIZE	A	B	C	D	E	F
3/16 (6)	MGL100-R6-6	MGL100-B6-6	MGL100-U6-6	.125 - .331	.191 - .201	.188	.345	.070	.486	.762	1.00
	MGL100-R6-9	MGL100-B6-9	MGL100-U6-9	.305 - .500	.191 - .201	.188	.345	.070	.653	.929	1.00
1/4 (8)	MGL100-R8-8	MGL100-B8-8	MGL100-U8-8	.160 - .475	.261 - .272	.257	.405	.079	.660	1.059	1.00
	MGL100-R8-12	MGL100-B8-12	MGL100-U8-12	.415 - .725	.261 - .272	.257	.405	.079	.910	1.309	1.00

To Order Call: 708-447-4500 or Outside Illinois 800-837-8707



Magna-Lok® LockRite™



Unique solid-circle lock ensures maximum strength and resistance to vibration. It is designed to eliminate pin pushout. It forms a mechanical lock, permanently locking the pin and sleeve together.

Typical Values in Normal Grip (lbs.)

DIAM. (NO.)		ALUMINUM	STEEL	STAINLESS STEEL
3/16	Shear	600	1300	1300
	Tensile	500	1200	950
	Pin Retention	50	150	100
1/4	Shear	1300	2500	2350
	Tensile	890	2200	1800
	Pin Retention	100	300	200
3/8	Shear	2950	5600	NA
	Tensile	1900	4000	NA
	Pin Retention	250	650	NA

Material and Finish

MATERIAL	SLEEVE	PIN	SLEEVE FINISH	PIN FINISH
Steel	Low Carbon Steel	Medium Carbon Steel	Zinc Plated Clear Chromate	Zinc Plated Gold Chromate
Aluminum	5056	7075	Clear Chromate	Gold Chromate
Stainless	302	305/304	Passivated	Dry Lubricated

Installation Tooling

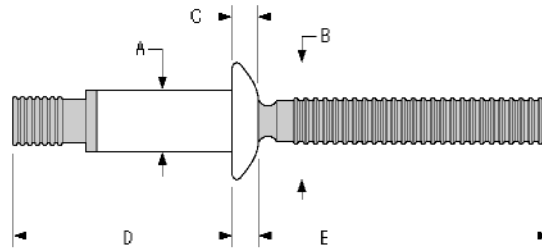
DIAM. (NO.)	INSTALLATION TOOL	NOSE ASSEMBLY	TYPE	USE
3/16	2025	99-3300	Pneudraulic	Maintenance & Repair
	202	99-3303 99-3321-68	Pneudraulic	Prod. or Maint. & Repair
	2015	125154 (Insert, included with tool)	Pneudraulic	Prod. or Maint. & Repair
	212	99-3300 99-3303	Pneudraulic	Production
	AK180-I	120982	Pneudraulic	Maintenance & Repair
	2480	99-3300 99-3303 99-3321-68	Hydraulic	Production
1/4	2025	99-3301	Pneudraulic	Maintenance & Repair
	202	99-3301 99-3321-68	Pneudraulic	Prod. or Maint. & Repair
	212	99-3301 99-3305 99-3321-68	Pneudraulic	Production
	AK180-I	202142	Pneudraulic	Maintenance & Repair
	2480	99-3301 99-3305 99-3321-68	Hydraulic	Production
3/8	246	99-3318	Pneudraulic	Production
	2580	99-3318	Hydraulic	Production



To Order Call: 708-447-4500 or Outside Illinois 800-837-8707

Magna-Bulb® LockRite™

High strength with a broader bearing surface. The Magna-Bulb® fastener creates a broader bearing surface that helps spread the load over more area for a stronger, longer lasting connection.



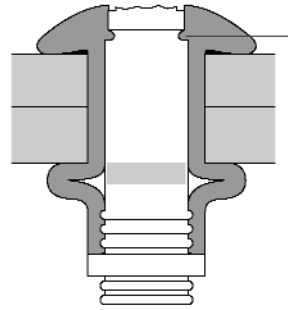
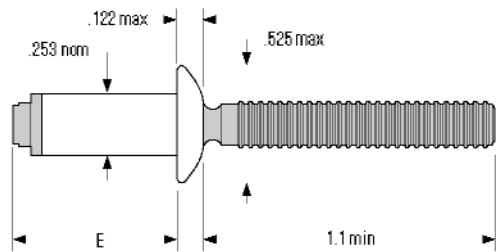
Specifications

DIAM. (NO.)	PART NO.	GRIP RANGE	D MAX
3/16 (6)	MBP-R6-M2	.075 - .110	.592
Hole Size=.191-.201	MBP-R6-M3	.087 - .150	.672
A nom=.187	MBP-R6-M4	.126 - .189	.695
B max=.385	MBP-R6-M5	.165 - .228	.734
C max=.101	MBP-R6-M6	.205 - .268	.774
E min=1.00	MBP-R6-M7	.244 - .307	.813
	MBP-R6-M8	.283 - .347	.853
	MBP-R6-M9	.323 - .386	.892
	MBP-R6-M10	.362 - .425	.931
1/4 (8)	MBP-R8-M2	.060 - .138	.759
Hole Size=.261-.272	MBP-R8-M3	.110 - .189	.861
A nom=.251	MBP-R8-M4	.150 - .229	.940
B max=.530	MBP-R8-M5	.189 - .268	.912
C max=.125	MBP-R8-M6	.229 - .308	.942
E min=1.10	MBP-R8-M7	.268 - .346	.981
	MBP-R8-M8	.308 - .387	1.021
	MBP-R8-M9	.346 - .425	1.060
	MBP-R8-M10	.387 - .466	1.100
	MBP-R8-M11	.425 - .504	1.139
	MBP-R8-M12	.466 - .545	1.179
	MBP-R8-M13	.504 - .583	1.218
5/16 (10)	MBP-R10-3	.150 - .250	1.115
Hole Size=.328-.340	MBP-R10-4	.200 - .300	1.165
A nom=.316	MBP-R10-5	.250 - .350	1.215
B max=.655	MBP-R10-6	.300 - .400	1.265
C max=.152	MBP-R10-7	.350 - .450	1.315
E min=1.38	MBP-R10-8	.400 - .500	1.365
	MBP-R10-9	.450 - .550	1.415
	MBP-R10-10	.500 - .600	1.465

To Order Call: 708-447-4500 or Outside Illinois 800-837-8707



Magna-Bulb® LockRite™



Unique solid-circle lock ensures maximum strength and resistance to vibration. It is designed to eliminate pin pushout.

Specifications – Clearance

DIAM. (NO.)	PART NO.	GRIP RANGE	E MAX
1/4	MBCP-R8-M2	.060-.138	.580
	MBCP-R8-M3	.110-.189	.627
	MBCP-R8-M5	.189-.268	.706
	MBCP-R8-M7	.268-.346	.785
	MBCP-R8-M8	.308-.387	.825
	MBCP-R8-M9	.346-.425	.864
	MBCP-R8-M11	.425-.504	.943
	MBCP-R8-M13	.504-.583	1.022

Typical Installed Values in Normal Grip (lbs.)

DIAM. (NO.)	SHEAR	TENSILE	PIN RETENTION
3/16	1700	1050	150
1/4	3500	1900	300
1/4(clearance)	3000	1600	300
5/16	5000	2960	450

Material and Finish

	MATERIAL	FINISH
Sleeve	Steel	Zinc Plated Gold Chromate
Pin	Steel	Zinc Plated Gold Chromate

Installation Tooling

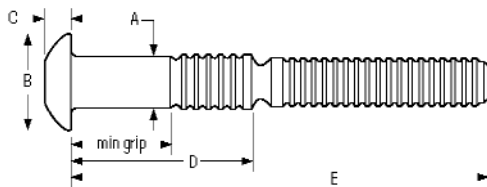
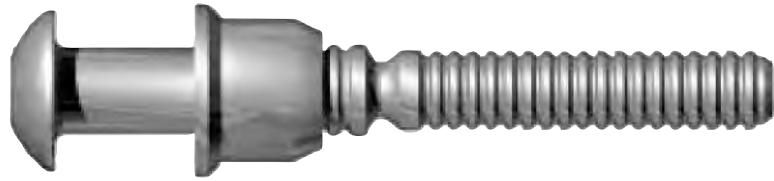
DIAM. (NO.)	INSTALLATION TOOL	NOSE ASSEMBLY	TYPE	USE
3/16	2025	99-3300	Pneudraulic	Maintenance & Repair
	2015	125154 (Insert, included with tool)	Pneudraulic	Prod. or Maint. & Repair
	202	99-3303	Pneudraulic	Production
	212	99-3300 99-3303	Pneudraulic	Production
	2480	99-3300 99-3303	Hydraulic	Production
1/4	2025	99-3301	Pneudraulic	Maintenance & Repair
	202	99-3301	Pneudraulic	Prod. or Maint. & Repair
	212	99-3301 99-3305	Pneudraulic	Production
	2480	99-3301 99-3305	Hydraulic	Production
5/16	256	99-3307	Pneudraulic	Production
	2580	99-3307	Hydraulic	Production



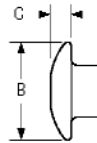
To Order Call: 708-447-4500 or Outside Illinois 800-837-8707

C6L® LockBolt™

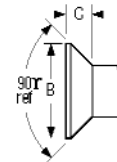
Vibration-resistant C6L® fasteners install with consistency and control. They resist loosening due to vibration and provide a high uniform clamp force. This is an excellent fastener for a wide range of structural applications.



Brazier Head



Truss Head



Flush Head—C6L90

Pin Dimensions

DIAM. (NO.)	MAXIMUM HOLE SIZE	A	BRAZIER HEAD		TRUSS HEAD		FLUSH HEAD	
			B	C	B	C	B	C
3/16 (6)	.203	.195 - .191	.394 - .356	.125 - .113	.469 - .406	.088 - .078	.354 - .328	.085 - .075
1/4 (8)	.266	.259 - .254	.525 - .475	.152 - .136	.594 - .531	.115 - .103	.473 - .437	.113 - .101
5/16 (10)	.328	.322 - .317	.656 - .594	.201 - .181	.797 - .703	.141 - .127	.589 - .547	.141 - .127
3/8 (12)	.391	.385 - .380	.787 - .713	.248 - .223	.922 - .828	.168 - .152	.709 - .656	.168 - .152

Collar Dimensions

COLLAR TYPE	PART NUMBER	COLLAR DIAMETER	F DIAMETER	G DIAMETER	H DIAMETER	J DIAMETER	K DIAMETER
Standard	2LC-R, 2LC-F, LC-I, 2LC-2CU	3/16	.187 - .196	.311 - .304	.220 - .260		
		1/4	.256 - .265	.409 - .402	.320 - .290		
	5/16	.304 - .312	.494 - .485	.380 - .350			
	3/8	.375 - .385	.600 - .590	.460 - .430			
Flange	3LC-2R, 3LC-F, 3LC-I, 3LC-2CU	3/16	.187 - .196	.311 - .304	.280 - .250	.062 - .031	.391 - .359
		1/4	.256 - .267	.409 - .402	.379 - .349	.078 - .047	.516 - .484
	5/16	.304 - .312	.507 - .498	.426 - .394	.094 - .062	.641 - .609	
	3/8	.378 - .390	.610 - .599	.532 - .502	.125 - .062	.781 - .719	
Low Profile	8LC-2R, 8LC-F, 8LC-I, 8LC-2CU	3/16	.187 - .196	.311 - .304	.162 - .132	.094	
		1/4	.256 - .265	.409 - .402	.202 - .172	.125	
	5/16	.304 - .312	.494 - .485	.255 - .225	.125		
	3/8	.375 - .385	.600 - .590	.295 - .310	.156		

Note: When using 3LC collars, add "J" dimension to thickness of material being fastened to determine grip number.

Note: When using 8LC collars, subtract "J" dimension from thickness of material being fastened to determine grip number.

Note: Use collars and pins together as shown in "Values" tables, or contact L.A. Fasteners.

To Order Call: 708-447-4500 or Outside Illinois 800-837-8707



C6L® LockBolt™

Grip Data 5/16 and 3/8 Diameter

GRIP NO.	GRIP MIN.	RANGE MAX.	6 (3/16) DIA		8 (1/4) DIA	
			D±1/32	E+1/8,-0	D±1/32	E+1/8,-0
2	.063	.188	.394	1.404	.485	1.520
4	.188	.313	.519	1.529	.610	1.645
6	.313	.438	.644	1.654	.735	1.770
8	.438	.563	.769	1.779	.860	1.895
10	.563	.688	.894	1.904	.985	2.020
12	.688	.813	1.019	2.029	1.110	2.145
14	.813	.938	1.144	2.154	1.235	2.270
16	.938	1.063	1.269	2.279	1.360	2.395
18	1.063	1.188	1.394	2.404	1.485	2.520
20	1.188	1.313	1.519	2.529	1.610	2.645

Grip Data 5/16 and 3/8 Diameter

GRIP NO.	GRIP MIN.	RANGE MAX.	10 (5/16) DIA		12 (3/8) DIA	
			D±1/32	E+1/8,-0	D±1/32	E+1/8,-0
4	.125	.375	.749	1.910	.809	2.121
6	.250	.500	.874	2.035	.934	2.246
8	.375	.625	.999	2.160	1.059	2.371
10	.500	.750	1.124	2.285	1.184	2.496
12	.625	.875	1.249	2.410	1.309	2.621
14	.750	1.000	1.374	2.535	1.434	2.746
16	.875	1.125	1.499	2.660	1.559	2.871
18	1.000	1.250	1.624	2.785	1.684	2.996
20	1.125	1.375	1.749	2.910	1.809	3.121

Note: "Grip" is actual thickness of material to be fastened—contact HUCK for grips not shown.
 Note: C6L90 is not available in grip 2 for 3/16 and 1/4 diameters and grip 4 for 3/8 diameter.

Installed Values in Normal Grip (lbs.)

	PIN COLLAR	6061 ALUMINUM (F) LC-1 or 3LC-1	2024 ALUMINUM (C) 2LC-F or 3LC-F	CARBON STEEL 2LC-R or 3LC-R	CRES (U) 2LC-2CU or 3LC-2CU
3/16	Shear	775	1050	1725	2000
	Tensile	530	1000	1650	1455
	Clamp	350	550	1025	1025
1/4	Shear	1375	1875	3050	3550
	Tensile	975	1800	3000	3750
	Clamp	620	950	1805	1805
5/16	Shear	2125	2925	4725	5525
	Tensile	1550	2850	4600	4250
	Clamp	965	1500	2810	2810
3/8	Shear	3050	4200	6825	7950
	Tensile	2400	4200	6500	6100
	Clamp	1380	2200	4020	4020

¹ Minimum installed values (pounds) in nominal grip

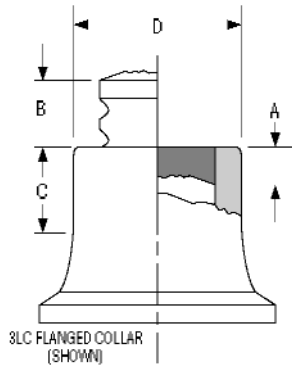


To Order Call: 708-447-4500 or Outside Illinois 800-837-8707

C6L® LockBolt™

Material and Finish

	MATERIAL	FINISH
Pin	Carbon Steel (R) 2024 Aluminum Alloy (C) 6061 Aluminum Alloy (F) CRES Steel (U)	Carbon Steel—none (plain black) 2024 Aluminum Alloy—Anodize per MIL-A-8625 or chemical surface treatment per MIL-C-5541 (Manufacturer's option) 6061 Aluminum Alloy—None CRES Steel—None
Collar	Low Carbon Steel (R) or (2R) 6061 Aluminum Alloy—Heat treated (F) 6061 Aluminum Alloy (I) CRES Steel (CU)	Carbon Steel—Zinc plated, Wax Film Lubricated Aluminum Alloy—None, Wax Film Lubricated CRES Steel—None, Wax Film Lubricated Wax Film Lubricated



A properly installed HUCKBOLT Fastener will possess the dimensional characteristics shown in the chart. Should the dimensions “A” or “B” exceed the indicated values, the fastener is being used out-of-grip. A “C” dimension less than the values specified is an indication of incomplete swage. A “D” dimension exceeding the specified values is an indication of an incorrect or worn anvil on the installation tool. Because of design margin built into the fastener and peculiar field installation conditions, failure of an installed fastener

to meet the specified dimensional criteria is not necessarily an indication of an improperly installed assembly. Conversely, a HUCKBOLT pin installed in a properly prepared hole with the recommended single cycle driving tool, which swages the lock collar material into the locking grooves of the pin and breaks off the pintail at the breakneck groove, will always possess at least the minimum guaranteed strength characteristics when the dimensional limits specified are met.

Inspection Data

NORMAL SIZE	A MAX GRIP	B MAX GRIP	C MIN	D DIA MAX
3/16	.078	.125	.172	.276
1/4	.078	.156	.250	.364
5/16	.141	.219	.281	.454
3/8	.125	.281	.344	.522

Installation Tooling

DIA.	INSTALLATION TOOL	NOSE ASSEMBLY	TYPE	USE
3/16	230	99-3003	Pneudraulic	Maintenance & Repair
	2025	99-3003	Pneudraulic	Maintenance & Repair
	212	99-3003	Pneudraulic	Production
	2480	99-3003	Hydraulic	Production
1/4	230	99-3006	Pneudraulic	Maintenance & Repair
	2025	99-3006	Pneudraulic	Maintenance & Repair
	212	99-3006	Pneudraulic	Production
	2480	99-3006	Hydraulic	Production
5/16	256	99-99-245	Pneudraulic	Production
	2580	99-99-245	Hydraulic	Production
3/8	256	99-100-245	Pneudraulic	Production
	2580	99-100-245	Hydraulic	Production

To Order Call: 708-447-4500 or Outside Illinois 800-837-8707





Part Number Identification

C6L LOCKBOLT PINS

C6L B - R 8 - 4 G

- Finish: G = zinc
- Grip Range: (See Grip Data Chart)
- Diameter: in 1/32" increments
- Material: R = carbon steel, C = 2024 alum. alloy, F = 6061 alum. alloy, U = CRES steel
- Style: T = truss head, B = brazier head, 90 = flush head

C6L LOCKBOLT COLLARS

2 LC - R 8 G

- Finish: G = zinc
- Diameter: in 1/32" increments
- R = carbon steel, F = 6061 alum. alloy heat treated, I = 6061 alum. alloy, CU = CRES steel
- Lock Collar
- Type: 2 = standard, 3 = flange

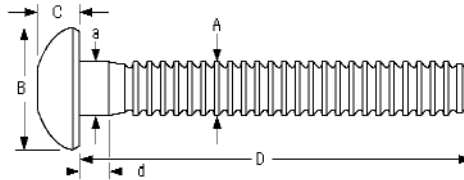
*Note: C120L (Grade 5) available at special request.
Contact your L.A. Fasteners representative for stainless steel capped and special finishes not published.*



To Order Call: 708-447-4500 or Outside Illinois 800-837-8707

Magna-Grip® LockBolt™

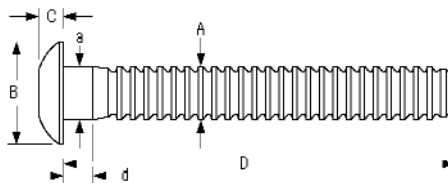
Grade 2 fastener that resists loosening. Widely known as the most reliable wide grip fastening system there is— the HUCK Magna-Grip® fastener also provides vibration resistance and high uniform installed values.



Brazier Head MGPB

Dimensional Data-Button Head

DIAM. (NO.)	GRIP NUMBER	GRIP RANGE	HOLE SIZE MAX	A	B	C	D +0.25-.000	A REF	D REF
3/16	10	.062 - .625	.203	.183-.187	.356-.394	.113-.125	1.788	.191-.195	.103-.125
(6)	20	.312 - 1.250	.203	.183-.187	.356-.394	.113-.125	2.730	.191-.195	.304-.320
1/4	10	.062 - .625	.265	.245-.249	.475-.525	.136-.152	1.965	.250-.259	.109-.141
(8)	20	.312 - 1.250	.265	.245-.249	.475-.525	.136-.152	2.560	.250-.259	.295-.329
5/16	12	.125 - .750	.328	.307-.311	.594-.656	.181-.201	2.340	.274-.283	.251-Max.
(10)	22	.625 - 1.375	.328	.307-.311	.594-.656	.181-.201	2.840	.317-.322	.533-.567
3/8	14	.125 - .875	.390	.369-.375	.713-.787	.223-.248	2.875	.380-.385	.172-.204
(12)	26	.812 - 1.625	.390	.369-.375	.713-.787	.223-.248	3.500	.380-.385	.794-.826



Truss Head MGPT

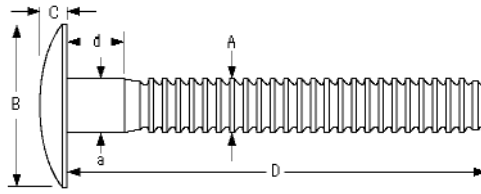
Dimensional Data-Truss Head

DIAM. (NO.)	GRIP NUMBER	GRIP RANGE	HOLE SIZE MAX	A	B	C	D +0.25-.000	A REF	D REF
1/4	10	.062 - .625	.265	.245-.249	.531-.594	.103-.115	1.965	.250-.259	.109-.141
(8)	20	.312 - 1.250	.265	.245-.249	.531-.594	.103-.115	2.560	.250-.259	.295-.329
5/16	12	.125 - .750	.328	.307-.311	.703-.797	.127-.141	2.340	.274-.283	.251-Max.
(10)	22	.625 - 1.375	.328	.307-.311	.703-.797	.127-.141	2.840	.317-.322	.533-.567
3/8	14	.125 - .875	.390	.369-.375	.828-.922	.152-.168	2.875	.380-.385	.172-.204
(12)	26	.812 - 1.625	.390	.369-.375	.828-.922	.190-.200	3.500	.380-.385	.794-.826

To Order Call: 708-447-4500 or Outside Illinois 800-837-8707



Magna-Grip® LockBolt™

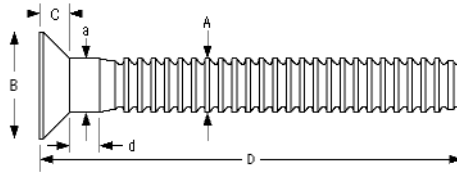


Broad Truss Head MGP30

Dimensional Data-Broad Truss Head

DIAM. (NO.)	GRIP NUMBER	GRIP RANGE	HOLE SIZE MAX	A	B	C	D ^{+0.25-.000}	A REF	D REF
1/4	10	.062 - .625	.265	.245-.249	**	.138-.162	1.965	.250-.259	.109-.141
(8)	24	.625 - 1.50	.265	.245-.249	**	.138-.162	2.810	.250-.259	.546-.578
3/8	24	.625 - 1.50	.390	.369-.375	1.188-1.250	.188-.212	3.375	.380-.385	.664-.696
(12)	32	1.125 - 2.00	.390	.369-.375	1.188-1.250	.188-.212	3.875	.380-.385	1.164-1.196

** Steel .937 Aluminum 1.063

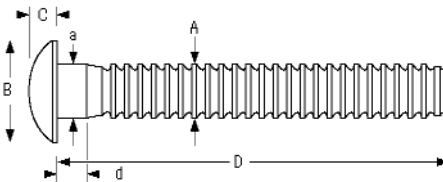


90° Flush Head MGP90

Dimensional Data-90° Flush Head

DIAM. (NO.)	GRIP NUMBER	GRIP RANGE	HOLE SIZE MAX	A	B	C	D ^{+0.25-.000}	A REF	D REF
3/16	10	.062 - .625	.203	.183-.187	.323-.359	.092-.102	1.788	.191-.195	.109-.141
(6)	20	.312 - 1.250	.203	.183-.187	.323-.359	.076-.087	2.370	.191-.195	.295-.329
1/4	10	.062 - .625	.265	.245-.249	.433-.478	.119-.128	1.965	.217-.226	.141-.181
(8)	20	.312 - 1.250	.265	.245-.249	.433-.478	.102-.115	2.560	.250-.259	.295-.329
5/16	12	.125 - .750	.328	.307-.311	.542-.594	.149-.162	2.340	.275-.280	.166-.206
(10)	22	.625 - 1.375	.328	.307-.311	.542-.594	.129-.142	2.840	.317-.322	.559-.591
3/8	14	.250 - .875	.390	.369-.375	.651-.714	.178-.195	2.875	.337-.342	.229-.269
(12)	26	.812 - 1.625	.390	.369-.375	.651-.714	.153-.170	3.500	.380-.385	.793-.827

1 "d" dimension is not applicable to short grip parts



Rivet Head MGP98T

Dimensional Data-Broad Truss Head

DIAM. (NO.)	GRIP NUMBER	GRIP RANGE	HOLE SIZE MAX	A	B	C	D ^{+0.25-.000}	A REF	D REF
3/16	10	.062 - .625	.203	.183-.187	.450-.488	.91-.105	1.801	.189-.196	.078-.096
(6)	20	.312 - 1.250	.203	.183-.187	.450-.488	.91-.105	2.383	.189-.196	.303-.321

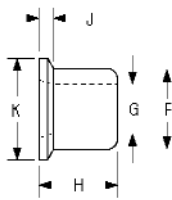


To Order Call: 708-447-4500 or Outside Illinois 800-837-8707

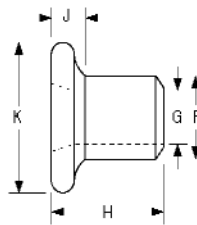
Magna-Grip® LockBolt™

Installed Values in Normal Grip (lbs.)

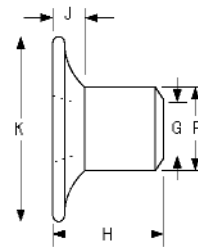
DIAM. (NO.)		ALUMINUM	STEEL	DIAM. (NO.)		ALUMINUM	STEEL
3/16	Shear	750	1725	5/16	Shear	2200	3000
	Tensile	900	1400		Tensile	2500	3910
	Clamp	550	925		Clamp	1600	2150
1/4	Shear	1200	2200	3/8	Shear	3000	4200
	Tensile	1620	2550		Tensile	4000	5625
	Clamp	950	1200		Clamp	2400	3200



Standard Flange MGC



Medium Flange MGCS



Wide Flange MGCW

Collar Dimensions

COLLAR	DIAMETER	F	G	H	J	K
MGC	3/16	.307-.313	.189-.195	.265-.285	.040-.052	.365-.385
	1/4	.399-.405	.250-.260	.360-.390	.055-.070	.480-.520
	5/16	.501-.509	.312-.320	.430-.446	.069-.086	.605-.645
	3/8	.603-.611	.376-.384	.490-.520	.086-.100	.730-.770
MGCS	3/16	.308-.315	.189-.195	.290-.320	.085-.115	.495-.535
MGCW	3/16	.307-.314	.189-.195	.290-.320	.090-.115	.640-.754
	1/4	.399-.405	.250-.260	.432-.462	.115-.145	.855-1.00



HG 256



HG 2025



HG AKI751

To Order Call: 708-447-4500 or Outside Illinois 800-837-8707

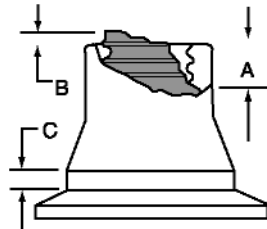


Magna-Grip® LockBolt™

Installation Tooling

DIAM. (NO.)	INSTALLATION TOOL	NOSE ASSEMBLY	TYPE	USE
3/16	2025	99-1456	Pneudraulic	Maintenance & Repair
	212	99-3201	Pneudraulic	Production
	245	99-3206	Pneudraulic	Production
	246	99-3206	Pneudraulic	Production
	2480	99-3201	Hydraulic	Production
	2580	99-3206	Hydraulic	Production
1/4	2025	99-1458	Pneudraulic	Maintenance & Repair
	212	99-3204	Pneudraulic	Production
	245	99-3207	Pneudraulic	Production
	246	99-3207	Pneudraulic	Production
	2480	99-3204	Hydraulic	Production
	2580	99-3207	Hydraulic	Production
5/16	245	99-1439	Pneudraulic	Production
	246	99-1439	Pneudraulic	Production
	2580	99-1439	Hydraulic	Production
	2600	99-3217	Pneudraulic	Production
3/8	245*	99-1440	Pneudraulic	Production
	246	99-1440	Pneudraulic	Production
	2580	99-1440	Hydraulic	Production
	2600	99-3220	Hydraulic	Production
	FE5901	99-1492	Hydraulic	Production
	5901	H99-1492	Hydraulic	Production

* Note: Aluminum Only

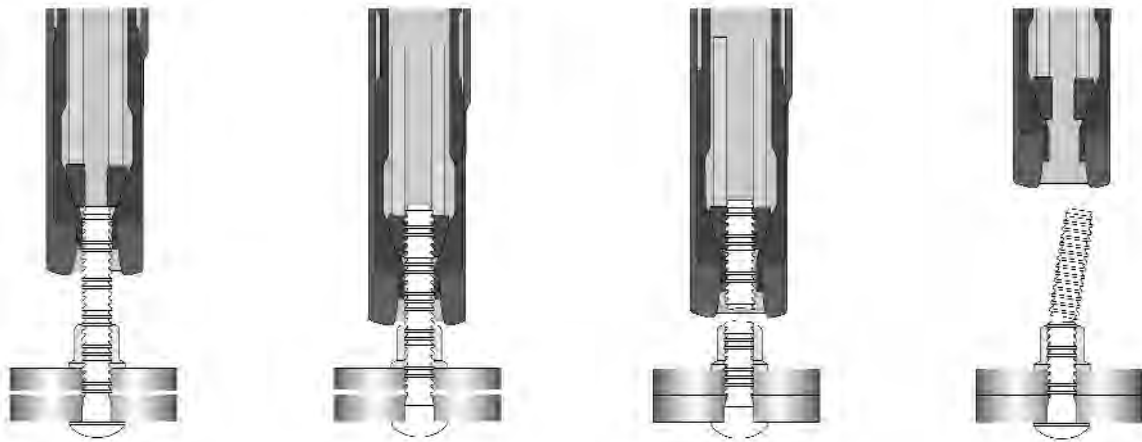


Inspection Data

DIAMETER	A MAX	B MAX	C MAX
3/16	1/16	1/32	.050
1/4	1/8	3/32	.100
5/16	3/16	9/64	.100
3/8	1/4	11/64	.100



To Order Call: 708-447-4500 or Outside Illinois 800-837-8707



Part Number Identification

MAGNA-GRIP PINS

MGP B - R8 - 10 G

- Finish: G = zinc, blank = no plate
- Grip Range: (See Grip Data Chart)
- Diameter: in 1/32" increments
- Material: R = carbon steel, E = 7075-T6 aluminum
- Head Style: B = button, T = truss, 30 = broad truss, 90 = 90° flush, 98T = rivet
- MAGNA-GRIP

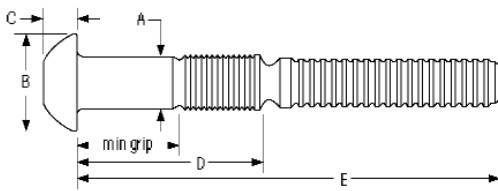
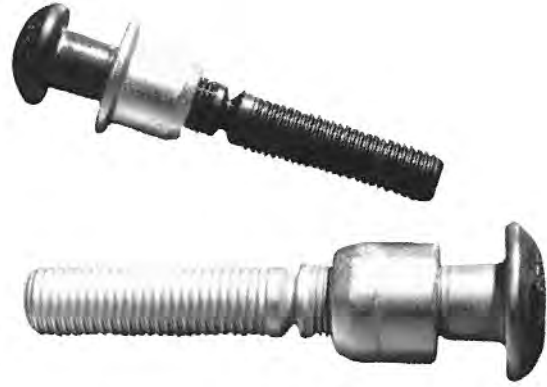
MAGNA-GRIP COLLARS

MG C - R 8 U L

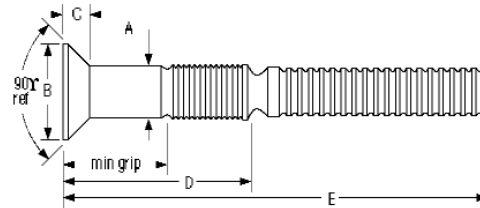
- Options: L = tab-lok
- Finish: U = zinc chromate gold, G = zinc chromate colorless
- Diameter: in 1/32" increments
- Material: R = carbon steel, F = 6061 aluminum
- Base Style: C = standard flange, CS = medium flange, CW = wide flange
- MAGNA-GRIP

C50L® PowerBolt™

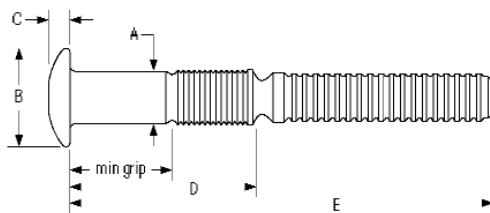
The rugged C50L® PowerBolt™ fastener is an alternative to Grade 5 bolts. Available in diameters ranging from 1/2" to 1-3/8", a variety of materials and head styles, the C50L® is ideal for applications where consistent, uniform clamp force is required.



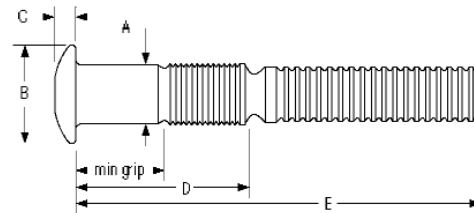
Round Head



90° Flush Head-C50L90



Truss Head-C50LT



Large Truss Head-C50L30

Fastener Dimensions

DIAM. (NO.)	A	ROUND HEAD		TRUSS HEAD C50LT		TRUSS HEAD C50L30		90° FLUSH HEAD	
		B	C	B	C	B	C	B	C
1/2 (16)	.515 - .493	59/64	5/16	59/64	15/64	1 3/32	17/64	29/32	1/4
5/8 (20)	.642 - .617	1 9/64	25/64	1 9/64	19/64	1 3/8	21/64	1 5/32	5/16
3/4 (24)	.768 - .741	1 3/8	15/32	1 3/8	23/64			1 3/8	3/8
7/8 (28)	.895 - .866	1 19/32	35/64	1 19/32	13/32			1 19/32	7/16
1 (32)	1.022 - .990	1 53/64	39/64	1 53/64	15/32			1 27/32	1/2
1 1/8 (36)	1.149 - 1.098	2 1/16	11/16						

1 3/8 See RamBolt for specifications.

Installed Fastener Values¹

DIAM. (NO.)	Carbon Steel Pins-LC-2R or 3LC-2R Collars			2024 ALuminum Pins-LC-F or 3LC-F Collars			6061 ALuminum Pins-LC-1 or 3LC-1 Collars			CRES Pins-LC-2CU or 3LC-2CU Collars		
	SHEAR	CLAMP	TENSILE	SHEAR	CLAMP	TENSILE	SHEAR	CLAMP	TENSILE	SHEAR	CLAMP	TENSILE
1/2	14400	12050	17050	7300	5900	7850	5300	4400	4900	13900	12050	17050
5/8	22500	19200	27100	11400	9200	12300	8300	6900	7670	21000	19200	27100
3/4	32400	28400	40100	16400	13300	17700	11900	9950	11040	30300	28400	40100
7/8	43400	39250	55450									
1	56500	51500	72700									
1 1/8	69500	58450	82950									

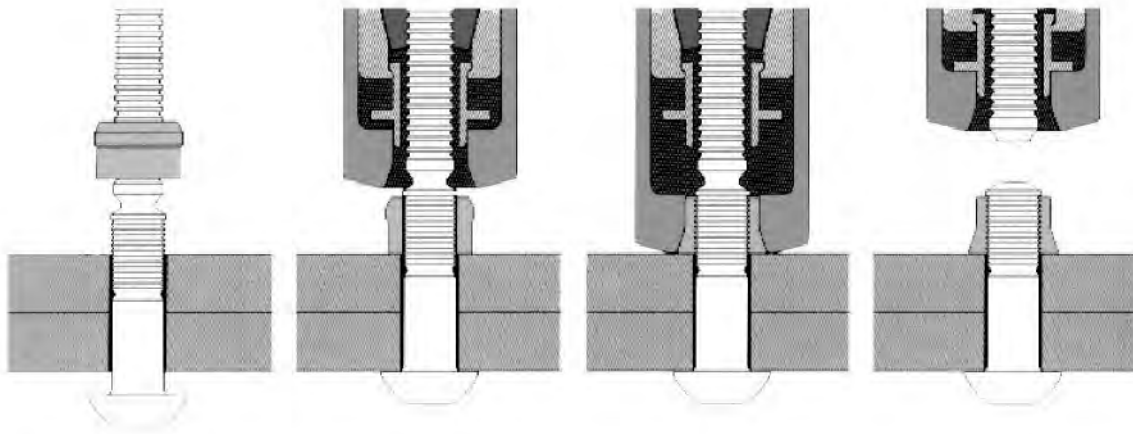
1 3/8 See RamBolt for specifications.

¹ Minimum values, in pounds, of installed fasteners. Round head, in carbon steel equivalent to ASTM A325 high strength bolts. Meets requirements of MIL-P-23469.



To Order Call: 708-447-4500 or Outside Illinois 800-837-8707

C50L® PowerBolt™



Part Number Identification

C50L PINS

Follow the form below to construct a part number for ordering C50L pins. Refer to the Grip Data chart for grip numbers.

C50L (HEAD STYLE) - (MATERIAL) (DIAMETER) - (GRIP NUMBER)

Example: C50LR-BR16-4 is a C50L HUCKBOLT fastener, Round Head, Carbon Steel, 1/2" Diameter, Grip 4

Head Style		Material		Diameter		Grip
Round	R	Carbon Steel	BR	1/2	16	Refer to Grip Data Chart
Truss	T	2024 Aluminum	C	5/8	20	
90° Flush	90	6061 Aluminum	F	3/4	24	
60° Flush	60	CRES 1	U	7/8	28	
				1	32	
				1 1/8	36	

¹ CRES fasteners are available in 16 through 24 diameters and through 36 grips only.

C6L COLLARS

Follow the form below to construct a part number for ordering collars for C50L pins.

(COLLAR STYLE) - (MATERIAL) (DIAMETER) - (FINISH) (OPTIONS)

Example: LC-2R16G is a Standard Collar, Low Carbon Steel, 1/2" Diameter, Zinc Finish

Collar Style		Material		Diameter		Finishes		Options	
Standard	LC	Low Carbon Steel		1/2	16	Zinc	G	Tab-Lok	L
Flanged	3LC	Zinc Plated	2R	5/8	20				
Low Profile	8LC	6061 Aluminum		3/4	24				
		Aged	F	7/8	28				
		6061 Aluminum	I	1	32				
		Stainless Steel	2CU	1 1/8	36				

To Order Call: 708-447-4500 or Outside Illinois 800-837-8707

