

# NUTS

HEX MACHINE SCREW NUTS			
SIZE	BOX QTY	ITEM #	STAINLESS #
6-32	200	HNM01	SSHNM01
8-32	200	HNM02	SSHNM02
10-32	200	HNM03	SSHNM03
10-24	200	HNM04	SSHNM04
12-24	100	HNM05	SSHNM05



PLATED WING NUTS - Cold Forged					
DESCRIPTION	BOX QTY	ITEM #	DESCRIPTION	BOX QTY	ITEM #
6-32	100	J754	1/4 - 28	100	J759
8-32	100	J755	5/16 - 18	100	J760
10-32	100	J756	3/8 - 16	100	J761
10-24	100	J757	7/16 - 14	50	J763
1/4-20	100	J758	1/2 - 13	50	J764

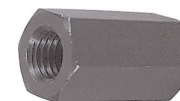


See page 153 for size specifications

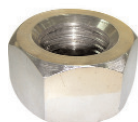
FINISHED HEX NUTS								
		USS (COARSE)		SAE (FINE)		GRADE 8		
SIZE	BOX QTY	LOW CARB.	STAINLESS	LOW CARB.	STAINLESS	BOX QTY	USS (COARSE)	SAE (FINE)
1/4	200	HNU04	SSHNU04	HNS04	SSHNS04	100	HNU804	HNS804
5/16	100	HNU05	SSHNU05	HNS05	SSHNS05	100	HNU805	HNS805
3/8	100	HNU06	SSHNU06	HNS06	SSHNS06	100	HNU806	HNS806
7/16	100	HNU07	SSHNU07	HNS07		100	HNU807	HNS807
1/2	100	HNU08	SSHNU08	HNS08	SSHNS08	50	HNU808	HNS808
9/16	50	HNU09	SSHNU09	HNS09	SSHNS09	50	HNU809	HNS809
5/8	50	HNU10	SSHNU10	HNS10	SSHNS10	25	HNU810	HNS810
3/4	25	HNU12	SSHNU12	HNS12	SSHNS12	25	HNU812	HNS812
7/8	25	HNU14	SSHNU14	HNS14		20	HNU814	HNS814
1"	20	HNU16		HNS16		10	HNU816	HNS816
1-1/8						10	HNU818	
1-1/4	20	HNU20				1	HNU820	
1-1/2						1	HNU824	

SAE (FINE) HIGH HEX NUTS - PLAIN			
SIZE	BOX QUANTITY	THICKNESS	ITEM # - SAE (FINE)
5/8	25	27/32	HNH10
3/4	25	1"	HNH12
7/8	20	1-5/32	BWPM1194
1"	10	1-5/16	BWPM1199

See page 185 for size specifications



HEAVY HEX NUTS					
SIZE	QUANTITY	ITEM #	SIZE	QUANTITY	ITEM #
1/4	25	HNHVU04	5/8	25	HNHVU10
5/16	25	HNHVU05	3/4	25	HNHVU12
3/8	25	HNHVU06	7/8	25	HNHVU14
7/16	25	HNHVU07	1"	25	HNHVU16
1/2	25	HNHVU08			



To Order Call: 708-447-4500 or Outside Illinois 800-837-8707

# LOCK NUTS



PLATED "KEP" LOCK NUTS							
SIZE	QTY	ITEM #	STAINLESS #	SIZE	QTY	ITEM #	STAINLESS #
6-32	100	J607		1/4 - 20	100	HNKU04	SSHNKU04
8-32	100	J608	SSHNK02	1/4 - 28	100	HNKS04	
10-24	100	J609	SSHNK03	5/16 - 18	100	HNKU05	SSHNKU05
10-32	100	J610		3/8 - 16	100	HNKU06	
12-24	100	J611					

See page 185 for size specifications

## STOVER LOCK NUTS (HEAT TREATED ALLOY-G8) - PLATED

SIZE	QUANTITY	ITEM # - USS	ITEM # - SAE
1/4	100	HNUST04	HNSST04
5/16	100	HNUST05	HNSST05
3/8	100	HNUST06	HNSST06
7/16	100	HNUST07	HNSST07
1/2	100	HNUST08	HNSST08
9/16	50	HNUST09	HNSST09
5/8	50	HNUST10	HNSST10
3/4	25	HNUST12	HNSST12
7/8	25	HNUST14	HNSST14
1"	20	HNUST16	HNSST16
1-1/8	10		HNSST18
1-1/4	10	HNUST20	



USS = COARSE  
SAE = FINE



## JAM NUTS

SIZE	QUANTITY	ITEM # - USS	ITEM # - SAE
3/8	100	HNJU06	
7/16	100		HNJS07
1/2	100	HNUJ08	
9/16	50	HNJU09	HNJS09
5/8	50	HNJU10	HNJS10
3/4	25	HNUJ12	HNJS12
7/8	25	HNUJ14	HNJS14
1"	25	HNUJ16	HNJS16

## NYLON INSERT LOCK NUTS - PLATED

SIZE	BOX QTY	ITEM # - USS (COARSE)		ITEM # - SAE (FINE)		USS (COARSE) STAINLESS
		LOW CARB.	GRADE 8	LOW CARB.	GRADE 8	
6-32	100	J885				SSHNUY01
8-32	100	J886				SSHNUY02
10-24	100	J887				SSHNUY03
1/4	100	HNUNY04	HNUNY804	HNSNY04	HNSNY804	SSHNUY04
5/16	100	HNUNY05	HNUNY805	HNSNY05	HNSNY805	SSHNUY05
3/8	100	HNUNY06	HNUNY806	HNSNY06	HNSNY806	SSHNUY06
7/16	100	HNUNY07	HNUNY807	HNSNY07	HNSNY807	SSHNUY07
1/2	50	HNUNY08	HNUNY808	HNSNY08	HNSNY808	SSHNUY08
9/16	50	HNUNY09	HNUNY809	HNSNY09	HNSNY809	SSHNUY09
5/8	25	HNUNY10	HNUNY810	HNSNY10	HNSNY810	SSHNUY10
3/4	25	HNUNY12	HNUNY812	HNSNY12	HNSNY812	SSHNUY12
7/8	20	HNUNY14	HNUNY814	HNSNY14	HNSNY814	SSHNUY14
1"	10	HNUNY16	HNUNY816	HNSNY16	HNSNY816	SSHNUY16
1-1/8	10	HNUNY18				
1-1/4	10	HNUNY20				
1-1/2	10	HNUNY24				



Reversible lock nuts are available.

## SERRATED HEX FLANGE NUTS

SIZE	QTY	USS #	SAE #
1/4	100	HNUF04	HNSF04
5/16	100	HNUF05	HNSF05
3/8	100	HNUF06	HNSF06

USS = COARSE  
SAE = FINE



## GRADE GT FLANGE LOCK NUTS

SIZE	QTY	USS #	SAE #
1/2	25	HNUF08	HNSF08
5/8	25	HNUF10	HNSF10
3/4	25	HNUF12	HNSF12

Black Phos & Oil for use with Grade 8 Flange Bolts

Hardened Steel Zinc Plated

To Order Call: 708-447-4500 or Outside Illinois 800-837-8707



# WASHERS

FLAT WASHERS						
SIZE	BOX QTY	ITEM #				
		USS (OD)	SAE (OD)	USS G8 (OD)	SAE G8 (OD)	USS STAINLESS
#6	500		WWM01			SSWWM01
#8	500		WWM02			SSWWM02
#10	250		WWM03			SSWWM03
#12	250		WWM05			SSWWM04
3/16	500	WWU03				
1/4	200	WWU04	WWS04	WWU804	WWS804	SSWWU04
5/16	200	WWU05	WWS05	WWU805	WWS805	SSWWU05
3/8	200	WWU06	WWS06	WWU806	WWS806	SSWWU06
7/16	100	WWU07	WWS07	WWU807	WWS807	SSWWU07
1/2	100	WWU08	WWS08	WWU808	WWS808	SSWWU08
9/16	50	WWU09	WWS09	WWU809	WWS809	SSWWU09
5/8	50	WWU10	WWS10	WWU810	WWS810	SSWWU10
3/4	25	WWU12	WWS12	WWU812	WWS812	SSWWU12
7/8	25	WWU14	WWS14	WWU814	WWS814	SSWWU14
1"	25	WWU16	WWS16	WWU816	WWS816	SSWWU16
1-1/8	25	WWU18			WWS818	
1-1/4	25	WWU20		WWU820	WWS820	
1-1/2 ZINC	25	WWU22				
1-1/2 PLAIN	25	WWU24	WWS24			
1-3/4	25	WWU28				
2"	25	WWU32				



See page 185 for size specifications

HARDENED EXTRA THICK FLAT WASHERS			
SIZE	BOX QTY	ITEM #	
		USS (OD)	SAE (OD)
1/4	100	WWU904	WWS904
5/16	100	WWU905	WWS905
3/8	100	WWU906	WWS906
7/16	100	WWU907	WWS907
1/2	100	WWU908	WWS908
9/16	50	WWU909	WWS909
5/8	50	WWU910	WWS910
3/4	25	WWU912	WWS912
7/8	25	WWU914	WWS914
1"	25	WWU916	WWS916



## MYLAR & NYLON WASHERS

DESCRIPTION & SIZE	ITEM #
3/8 MYLAR WASHERS .375 ID-1" OD X .014 THICK	WWM06
3/8 NYLON WASHERS .431 ID-.745 OD X .0635 THICK	WWN06



FENDER WASHERS											
SIZE OD	QTY	ITEM #	HEAVY #	STAINLESS#	QTY	SIZE OD	QTY	ITEM #	HEAVY #	STAINLESS#	QTY
3/16X1	100	WWF0310				5/16X2	100	WWF0520			
3/16X1-1/4	100	WWF03		SSWWF03	25	3/8X1	100			SSWWF0610	25
1/4X1	100	WWF0410		SSWWF0410	100	3/8X1-1/4	100	WWF0611		SSWWF06	25
1/4X1-1/4	100	WWF04	WWFH04	SSWWF04	25	3/8X1-1/2	100	WWF06	WWFH06	SSWWF0612	50
1/4X1-1/2	100	WWF0412	WWFH0412	SSWWF0412	100	3/8X2	100	WWF0620	WWFH06		
5/16X1	100	WWF0510		SSWWF0510	25	1/2X1-1/2	100	WWF08			
5/16X1-1/4	100	WWF05	WWFH05	SSWW0511	25	1/2X1-3/4	100	WWF0813			
5/16X1-1/2	100	WWF0512	WWFH0512	SSWWF05	25	1/2X2	100	WWF0820	WWFHD08	SSWWF08	50



To Order Call: 708-447-4500 or Outside Illinois 800-837-8707

# LOCK WASHERS

LOCK WASHERS						
	LOW CARBON PLATED		GRADE 8 PLATED		STAINLESS STEEL	
SIZE	BOX QTY	ITEM #	BOX QTY	ITEM #	BOX QTY	ITEM #
#4	100	WWLM00				
#6	250	WWLM01			100	SSWWLM01
#8	250	WWLM02			100	SSWWLM02
#10	500	WWLM03			100	SSWWLM03
#12	500	WWLM04			100	SSWWLM04
1/4	500	WWL04	100	WWL804	100	SSWWL04
5/16	500	WWL05	100	WWL805	100	SSWWL05
3/8	500	WWL06	100	WWL806	100	SSWWL06
7/16	200	WWL07	100	WWL807	100	SSWWL07
1/2	200	WWL08	100	WWL808	100	SSWWL08
9/16	100	WWL09	100	WWL809	50	SSWWL09
5/8	100	WWL10	100	WWL810	50	SSWWL10
3/4	50	WWL12	50	WWL812	50	SSWWL12
7/8	50	WWL14	50	WWL814	25	
1"	25	WWL16	25	WWL816	25	
1-1/8	25	WWL18				
1-1/4"	25	WWL20	20	WWL820		
1-1/2"	25	WWL24				



\* Add "P" for Plain

INTERNAL & EXTERNAL LOCK WASHERS - PLATED			
SIZE	BOX QUANTITY	ITEM # - INTERNAL	ITEM # - EXTERNAL
#4	100		WWLME04
#6	100	WWLMI01	WWLME01
#8	100	WWLMI02	WWLME02
#10	100	WWLMI03	WWLME03
#12	100	WWLMI05	WWLME05
1/4	100	WWLI04	WWLE04
5/16	100	WWLI05	WWLE05
3/8	100	WWLI06	WWLE06
7/16	100	WWLI07	WWLE07
1/2	100	WWLI08	WWLE08
9/16	25	WWLI09	WWLE09
5/8	25	WWLI10	WWLE10
3/4	25	WWLI12	WWLE12
7/8	25	WWLI14	WWLE14
1"	25	WWLI16	WWLE16



To Order Call: 708-447-4500 or Outside Illinois 800-837-8707



# 1/4" & 5/16" HEX HEAD CAP SCREWS

HEX HEAD CAP SCREWS						
SIZE	BOX QTY	ZINC PLATED		YELLOW PLATED		STAINLESS
		GRADE 5		GRADE 8		USS
		USS	SAE	USS	SAE	USS
1/4 x 1/2	100	GFU0402	GFS0402	GEU0402	GES0402	SSHHU0402
1/4 x 3/4	100	GFU0403	GFS0403	GEU0403	GES0403	SSHHU0403
1/4 x 5/8	100	GFU0405	GFS0405			SSHHU0405
1/4 x 7/8	100	GFU0407				
1/4 x 1	100	GFU0410	GFS0410	GEU0410	GES0410	SSHHU0410
1/4 x 1-1/4	100	GFU0411	GFS0411	GEU0411	GES0411	SSHHU0411
1/4 x 1-1/2	100	GFU0412	GFS0412	GEU0412	GES0412	SSHHU0412
1/4 x 1-3/4	100	GFU0413	GFS0413	GEU0413	GES0413	SSHHU0413
1/4 x 2	100	GFU0420	GFS0420	GEU0420	GES0420	SSHHU0420
1/4 x 2-1/4	100	GFU0421	GFS0421	GEU0421	GES0421	
1/4 x 2-1/2	100	GFU0422	GFS0422	GEU0422	GES0422	SSHHU0422
1/4 x 2-3/4	50	GFU0423	GFS0423	GEU0423	GES0423	
1/4 x 3	50	GFU0430	GFS0430	GEU0430	GES0430	SSHHU0430
1/4 x 3-1/4	50	GFU0431			GES0431	
1/4 x 3-1/2	50	GFU0432	GFS0432	GEU0432	GES0432	SSHHU0432
1/4 x 3-3/4	50	GFU0433			GES0433	
1/4 x 4	50	GFU0440	GFS0440	GEU0440	GES0440	
1/4 x 4-1/2	50	GFU0442	GFS0442	GEU0442	GES0442	
1/4 x 5	50	GFU0450	GFS0450	GEU0450	GES0450	
1/4 x 5-1/2	25	GFU0452	GFS0452	GEU0452	GES0452	
1/4 x 6	25	GFU0460	GFS0460	GEU0460	GES0460	SSHHU0460
5/16 x 1/2	100	GFU0502	GFS0502	GEU0502	GES0502	
5/16 x 3/4	100	GFU0503	GFS0503	GEU0503	GES0503	SSHHU0503
5/16 x 5/8	100	GFU0505				
5/16 x 7/8	100	GFU0507				
5/16 x 1	100	GFU0510	GFS0510	GEU0510	GES0510	SSHHU0510
5/16 x 1-1/4	100	GFU0511	GFS0511	GEU0511	GES0511	SSHHU0511
5/16 x 1-1/2	100	GFU0512	GFS0512	GEU0512	GES0512	SSHHU0512
5/16 x 1-3/4	100	GFU0513	GFS0513	GEU0513	GES0513	
5/16 x 2	100	GFU0520	GFS0520	GEU0520	GES0520	SSHHU0520
5/16 x 2-1/4	50	GFU0521	GFS0521	GEU0521	GES0521	SSHHU0521
5/16 x 2-1/2	50	GFU0522	GFS0522	GEU0522	GES0522	SSHHU0522
5/16 x 2-3/4	50	GFU0523	GFS0523	GEU0523	GES0523	SSHHU0523
5/16 x 3	50	GFU0530	GFS0530	GEU0530	GES0530	SSHHU0530
5/16 x 3-1/2	25	GFU0532	GFS0532	GEU0532	GES0532	SSHHU0532
5/16 x 3-3/4	25			GEU0533		
5/16 x 4	25	GFU0540	GFS0540	GEU0540	GES0540	SSHHU0540
5/16 x 4-1/2	25	GFU0542	GFS0542	GEU0542	GES0542	
5/16 x 5	25	GFU0550	GFS0550	GEU0550	GES0550	SSHHU0550
5/16 x 5-1/2	25	GFU0552	GFS0552	GEU0552	GES0552	
5/16 x 6	25	GFU0560	GFS0560	GEU0560	GES0560	

USS = COARSE  
SAE = FINE



See page 185 for specifications



To Order Call: 708-447-4500 or Outside Illinois 800-837-8707

# 3/8" & 7/16" HEX HEAD CAP SCREWS

USS = COARSE  
SAE = FINE



HEX HEAD CAP SCREWS						
SIZE	BOX QTY	ZINC PLATED		YELLOW PLATED		STAINLESS
		GRADE 5		GRADE 8		
		USS	SAE	USS	SAE	USS
3/8 x 1/2	100	GFU0602	GFS0602	GEU0602	GES0602	
3/8 x 3/4	100	GFU0603	GFS0603	GEU0603	GES0603	SSHHU0603
3/8 x 5/8	100			GEU0605		
3/8 x 7/8	100	GFU0607	GFS0607		GES0607	SSHHU0607
3/8 x 1	100	GFU0610	GFS0610	GEU0610	GES0610	SSHHU0610
3/8 x 1-1/4	100	GFU0611	GFS0611	GEU0611	GES0611	SSHHU0611
3/8 x 1-1/2	50	GFU0612	GFS0612	GEU0612	GES0612	SSHHU0612
3/8 x 1-3/4	50	GFU0613	GFS0613	GEU0613	GES0613	SSHHU0613
3/8 x 2	50	GFU0620	GFS0620	GEU0620	GES0620	SSHHU0620
3/8 x 2-1/4	50	GFU0621	GFS0621	GEU0621	GES0621	
3/8 x 2-1/2	50	GFU0622	GFS0622	GEU0622	GES0622	SSHHU0622
3/8 x 2-3/4	50	GFU0623	GFS0623	GEU0623	GES0623	SSHHU0623
3/8 x 3	50	GFU0630	GFS0630	GEU0630	GES0630	SSHHU0630
3/8 x 3-1/4	50	GFU0631	GFS0631	GEU0631		
3/8 x 3-1/2	50	GFU0632	GFS0632	GEU0632	GES0632	SSHHU0632
3/8 x 3-3/4	50			GEU0633		
3/8 x 4	25	GFU0640	GFS0640	GEU0640	GES0640	SSHHU0640
3/8 x 4-1/4	25	GFU0641				
3/8 x 4-1/2	25	GFU0642	GFS0642	GEU0642	GES0642	SSHHU0642
3/8 x 5	25	GFU0650	GFS0650	GEU0650	GES0650	
3/8 x 5-1/2	25	GFU0652	GFS0652	GEU0652	GES0652	
3/8 x 6	25	GFU0660	GFS0660	GEU0660	GES0660	
3/8 x 6-1/2	25			GEU0662		
3/8 x 7	25			GEU0670		
3/8 x 8	25	GFU0680				
7/16 x 3/4	100	GFU0703	GFS0703	GEU0703	GES0703	SSHHU0703
7/16 x 1	100	GFU0710	GFS0710	GEU0710	GES0710	SSHHU0710
7/16 x 1-1/4	50	GFU0711	GFS0711	GEU0711	GES0711	SSHHU0711
7/16 x 1-1/2	50	GFU0712	GFS0712	GEU0712	GES0712	SSHHU0712
7/16 x 1-3/4	50	GFU0713	GFS0713	GEU0713	GES0713	
7/16 x 2	50	GFU0720	GFS0720	GEU0720	GES0720	SSHHU0720
7/16 x 2-1/4	50	GFU0721	GFS0721	GEU0721	GES0721	
7/16 x 2-1/2	50	GFU0722	GFS0722	GEU0722	GES0722	SSHHU0722
7/16 x 2-3/4	50	GFU0723	GFS0723	GEU0723	GES0723	
7/16 x 3	25	GFU0730	GFS0730	GEU0730	GES0730	SSHHU0730
7/16 x 3-1/4	25			GEU0731	GES0731	
7/16 x 3-1/2	25	GFU0732	GFS0732	GEU0732	GES0732	SSHHU0732
7/16 x 4	25	GFU0740	GFS0740	GEU0740	GES0740	SSHHU0740
7/16 x 4-1/2	25	GFU0742	GFS0742	GEU0742	GES0742	
7/16 x 5	25	GFU0750	GFS0750	GEU0750	GES0750	
7/16 x 5-1/2	25	GFU0752	GFS0752	GEU0752	GES0752	
7/16 x 6	25	GFU0760	GFS0760	GEU0760	GES0760	
7/16 x 7	1	GFU0770				
7/16 x 8	1			GEU0780		

See page 185 for size specifications

To Order Call: 708-447-4500 or Outside Illinois 800-837-8707



# 1/2" HEX HEAD CAP SCREWS

HEX HEAD CAP SCREWS						
SIZE	BOX QTY	ZINC PLATED GRADE 5		YELLOW PLATED GRADE 8		STAINLESS
		USS	SAE	USS	SAE	USS
1/2 x 3/4	100	GFU0803	GFS0803	GEU0803	GES0803	
1/2 x 1	50	GFU0810	GFS0810	GEU0810	GES0810	SSHHU0810
1/2 x 1-1/4	50	GFU0811	GFS0811	GEU0811	GES0811	SSHHU0811
1/2 x 1-1/2	50	GFU0812	GFS0812	GEU0812	GES0812	SSHHU0812
1/2 x 1-3/4	50	GFU0813	GFS0813	GEU0813	GES0813	SSHHU0813
1/2 x 1-3/8	50	GFU0816				
1/2 x 2	50	GFU0820	GFS0820	GEU0820	GES0820	SSHHU0820
1/2 x 2-1/4	50	GFU0821	GFS0821	GEU0821	GES0821	
1/2 x 2-1/2	25	GFU0822	GFS0822	GEU0822	GES0822	SSHHU0822
1/2 x 2-3/4	25	GFU0823	GFS0823	GEU0823	GES0823	
1/2 x 3	25	GFU0830	GFS0830	GEU0830	GES0830	SSHHU0830
1/2 x 3-1/4	25	GFU0831		GEU0831		
1/2 x 3-1/2	25	GFU0832	GFS0832	GEU0832	GES0832	SSHHU0832
1/2 x 3-3/4	25	GFU0833				
1/2 x 4	25	GFU0840	GFS0840	GEU0840	GES0840	SSHHU0840
1/2 x 4-1/2	20	GFU0842	GFS0842	GEU0842	GES0842	SSHHU0842
1/2 x 4-3/4	20			GEU0843		
1/2 x 5	20	GFU0850	GFS0850	GEU0850	GES0850	SSHHU0850
1/2 x 5-1/2	20	GFU0852	GFS0852	GEU0852	GES0852	
1/2 x 6	20	GFU0860	GFS0860	GEU0860	GES0860	SSHHU0860
				- PLAIN -		
				GRADE 8		
				USS	SAE	
1/2 x 6-1/2	1	GFU0862		GEU0862	GES0862	
1/2 x 7	1			GEU0870	GES0870	
1/2 x 7-1/4	1	GFU0871				
1/2 x 7-1/2	1			GEU0872	GES0872	
1/2 x 8	1			GEU0880	GES0880	
1/2 x 9	1			GEU0890	GES0890	
1/2 x 9-1/2	1	GFU0892		GEU0892	GES0892	
1/2 x 10	1			GEU08100		
1/2 x 11	1	GFU08110		GEU08110		

USS = COARSE  
SAE = FINE



See page 185 for size specifications

INFASCO



To Order Call: 708-447-4500 or Outside Illinois 800-837-8707

# 9/16" HEX HEAD CAP SCREWS



USS = COARSE  
SAE = FINE



HEX HEAD CAP SCREWS						
SIZE	BOX QTY	ZINC PLATED		YELLOW PLATED		STAINLESS
		GRADE 5		GRADE 8		
		USS	SAE	USS	SAE	
9/16 x 1	50	GFU0910		GEU0910	GES0910	SSHHU0910
9/16 x 1-1/4	50	GFU0911	GFS0911	GEU0911	GES0911	SSHHU0911
9/16 x 1-1/2	50	GFU0912	GFS0912	GEU0912	GES0912	SSHHU0912
9/16 x 1-3/4	50	GFU0913	GFS0913	GEU0913	GES0913	
9/16 x 2	50	GFU0920	GFS0920	GEU0920	GES0920	SSHHU0920
9/16 x 2-1/4	50	GFU0921		GEU0921	GES0921	
9/16 x 2-1/2	25	GFU0922	GFS0922	GEU0922	GES0922	
9/16 x 2-3/4	25			GEU0923		
9/16 x 3	25	GFU0930	GFS0930	GEU0930	GES0930	
9/16 x 3-1/4	25			GEU0931	GES0931	
9/16 x 3-1/2	25	GFU0932	GFS0932	GEU0932	GES0932	
9/16 x 3-3/4	25			GEU0933	GES0933	
9/16 x 4	25	GFU0940	GFS0940	GEU0940	GES0940	
9/16 x 4-1/2	20	GFU0942	GFS0942	GEU0942	GES0942	
9/16 x 5	20	GFU0950	GFS0950	GEU0950	GES0950	
9/16 x 5-1/2	20	GFU0952	GFS0952	GEU0952	GES0952	
9/16 x 6	20	GFU0960	GFS0960	GEU0960	GES0960	
				- PLAIN -		
				GRADE 8		
				USS	SAE	
9/16 x 6-1/2	1			GEU0962		
9/16 x 7	1			GEU0970	GES0970	
9/16 x 7-1/2	1			GEU0972	GES0972	
9/16 x 8	1			GEU0980		

See page 185 for size specifications



GRADE 8 PLOW BOLTS		
DESCRIPTION	BOX QTY	ITEM #
1/2-13 x3	25	GEUP0830
5/8-11 X 2-1/4	25	GEUP1021
5/8-11 X 2-1/2	25	GEUP1022
5/8-11 X 3	25	GEUP1030
5/8-11 X 3-1/2	25	GEUP1032
5/8-11 X 4	25	GEUP1040
3/4-10 X 2-1/2	25	GEUP1222
3/4-10 X 3	25	GEUP1230
3/4-10 X 3-1/2	25	GEUP1232
3/4-10 X 4	25	GEUP1240
3/4-10 X 4-1/4	25	GEUP1242

To Order Call: 708-447-4500 or Outside Illinois 800-837-8707





# 5/8" HEX HEAD CAP SCREWS

HEX HEAD CAP SCREWS						
SIZE	BOX QTY	ZINC PLATED		YELLOW PLATED		STAINLESS
		GRADE 5		GRADE 8		
		USS	SAE	USS	SAE	USS
5/8 x 1	25	GFU1010		GEU1010	GES1010	
5/8 x 1-1/4	25	GFU1011	GFS1011	GEU1011	GES1011	SSHHU1011
5/8 x 1-1/2	25	GFU1012	GFS1012	GEU1012	GES1012	SSHHU1012
5/8 x 1-3/4	25	GFU1013	GFS1013	GEU1013	GES1013	SSHHU1013
5/8 x 2	25	GFU1020	GFS1020	GEU1020	GES1020	SSHHU1020
5/8 x 2-1/4	25	GFU1021	GFS1021	GEU1021	GES1021	
5/8 x 2-1/2	25	GFU1022	GFS1022	GEU1022	GES1022	SSHHU1022
5/8 x 2-3/4	25	GFU1023	GFS1023	GEU1023	GES1023	
5/8 x 3	25	GFU1030	GFS1030	GEU1030	GES1030	SSHHU1030
5/8 x 3-1/4	25	GFU1031		GEU1031	GES1031	
5/8 x 3-1/2	25	GFU1032	GFS1032	GEU1032	GES1032	SSHUU1032
5/8 x 3-3/4	25	GFU1033		GEU1033		
5/8 x 4	25	GFU1040	GFS1040	GEU1040	GES1040	SSHHU1040
5/8 x 4-1/4	20	GFU1041		GEU1041		
5/8 x 4-1/2	20	GFU1042	GFS1042	GEU1042	GES1042	SSHHU1042
5/8 x 5	20	GFU1050	GFS1050	GEU1050	GES1050	
5/8 x 5-1/2	10	GFU1052	GFS1052	GEU1052	GES1052	
5/8 x 6	10	GFU1060	GFS1060	GEU1060	GES1060	
				- PLAIN -		
				GRADE 8		
				USS	SAE	
5/8 x 6-1/2	1			GEU1062	GES1062	
5/8 x 7	1			GEU1070	GES1070	SSHHU1070
5/8 x 7-1/2	1			GEU1072	GES1072	
5/8 x 8	1			GEU1080	GES1080	
5/8 x 8-1/2	1			GEU1082	GES1082	
5/8 x 9	1			GEU1090	GES1090	
5/8 x 9-1/2	1					
5/8 x 10	1	GFU10100		GEU10100		
5/8 x 10-1/2	1					
5/8 x 11	1					
5/8 x 11-1/2	1					
5/8 x 12	1	GFU1020		GEU10120		
5/8 x 13	1	GFU10130		GEU101300		

USS = COARSE  
SAE = FINE



See page 185 for size specifications

INFASCO



To Order Call: 708-447-4500 or Outside Illinois 800-837-8707

# 3/4" HEX HEAD CAP SCREWS



HEX HEAD CAP SCREWS						
SIZE	BOX QTY	ZINC PLATED		YELLOW PLATED		STAINLESS
		GRADE 5		GRADE 8		
		USS	SAE	USS	SAE	
3/4 x 1	20		GFS1210	GEU1210	GES1210	
3/4 x 1-1/4	20	GFU1211	GFS1211	GEU1211	GES1211	
3/4 x 1-1/2	20	GFU1212	GFS1212	GEU1212	GES1212	
3/4 x 1-3/4	20	GFU1213	GFS1213	GEU1213	GES1213	
3/4 x 2	20	GFU1220	GFS1220	GEU1220	GES1220	
3/4 x 2-1/4	20	GFU1221	GFS1221	GEU1221	GES1221	
3/4 x 2-1/2	10	GFU1222	GFS1222	GEU1222	GES1222	SSHHU1222
3/4 x 2-3/4	10	GFU1223	GFS1223	GEU1223	GES1223	
3/4 x 3	10	GFU1230	GFS1230	GEU1230	GES1230	SSHHU1230
3/4 x 3-1/4	10	GFU1231		GEU1231	GES1231	
3/4 x 3-1/2	10	GFU1232	GFS1232	GEU1232	GES1232	
3/4 x 3-3/4	10	GFU1234		GEU1233		
3/4 x 4	10	GFU1240	GFS1240	GEU1240	GES1240	
3/4 x 4-1/2	10	GFU1242	GFS1242	GEU1242	GES1242	
3/4 x 5	10	GFU1250	GFS1250	GEU1250	GES1250	
3/4 x 5-1/2	10	GFU1252	GFS1252	GEU1252	GES1252	
3/4 x 6	10	GFU1260	GFS1260	GEU1260	GES1260	
				- PLAIN -		
				GRADE 8		
				USS	SAE	
3/4 x 6-1/2	1			GEU1262	GES1262	SSHHU1262
3/4 x 7	1			GEU1270	GES1270	
3/4 x 7-1/2	1			GEU1272	GES1272	
3/4 x 8	1			GEU1280	GES1280	
3/4 x 8-1/2	1			GEU1282	GES1282	
3/4 x 9	1			GEU1290	GES1290	
3/4 x 9-1/2	1					
3/4 x 10	1			GEU12100		
3/4 x 10-1/2	1			GEU12102		
3/4 x 11	1					
3/4 x 11-1/2	1					
3/4 x 12	1			GEU12120		

See page 185 for size specifications

USS = COARSE  
SAE = FINE

INFASCO

To Order Call: 708-447-4500 or Outside Illinois 800-837-8707



# 7/8" HEX HEAD CAP SCREWS

HEX HEAD CAP SCREWS					
SIZE	BOX QTY	ZINC PLATED		PLAIN	
		GRADE 5		GRADE 8	
		USS	SAE	USS	SAE
7/8 x 1-1/4	20				GES1411
7/8 x 1-1/2	20			GEU1412	
7/8 x 1-3/4	20				GES1413
7/8 x 2	20	GFU1420	GFS1420	GEU1420	GES1420
7/8 x 2-1/4	20			GEU1421	
7/8 x 2-1/2	10	GFU1422	GFS1422	GEU1422	GES1422
7/8 x 2-3/4	10			GEU1423	
7/8 x 3	10	GFU1430	GFS1430	GEU1430	GES1430
7/8 x 3-1/2	10	GFU1432	GFS1432	GEU1432	GES1432
7/8 x 4	10	GFU1440	GFS1440	GEU1440	GES1440
7/8 x 4-1/2	10	GFU1442	GFS1442	GEU1442	GES1442
7/8 x 5	10	GFU1450	GFS1450	GEU1450	GES1450
7/8 x 5-1/2	10	GFU1452	GFS1452	GEU1452	GES1452
7/8 x 6	10	GFU1460	GFS1460	GEU1460	GES1460
- PLAIN -					
GRADE 8					
				USS	SAE
7/8 x 6-1/2	1			GEU1462	GES1462
7/8 x 7	1			GEU1470	GES1470
7/8 x 7-1/2	1			GEU1472	GES1472
7/8 x 8	1			GEU1480	GES1480
7/8 x 8-1/2	1			GEU1482	
7/8 x 9	1	GFU1490		GEU1490	GES1490
7/8 x 9-1/2	1				GES1492
7/8 x 10	1			GEU14100	
7/8 x 11	1			GEU14110	

USS = COARSE  
SAE = FINE



See page 185 for size specifications

### THE LA101 SAE (FINE) GRADE 5 ASSORTMENT CONTAINS:

ITEM #	DESCRIPTION	ITEM #	DESCRIPTION
HNS04	1/4-28 HEX NUT	GFS0620	3/8-24 X 2
HNS05	5/16-24 HEX NUT	GFS0622	3/8-24 X 2 1/2
HNS06	3/8-24 HEX NUT	GFS0630	3/8-24 X 3
HNS07	7/16-20 HEX NUT	GFS0710	7/16-20 X 1
HNS08	1/2-20 HEX NUT	GFS0711	7/16-20 X 1 1/4
HNS09	9/16-18 HEX NUT	GFS0712	7/16-20 X 1 1/2
HNS10	5/8-18 HEX NUT	GFS0713	7/16-20 X 1 3/4
WWS04	1/4 FLAT WASHER	GFS0722	7/16-20 X 2 1/2
WWS05	5/16 FLAT WASHER	GFS0730	7/16-20 X 3
WWS06	3/8 FLAT WASHER	GFS0811	1/2-20 X 1 1/4
WWS07	7/16 FLAT WASHER	GFS0812	1/2-20 X 1 1/2
WWS08	1/2 FLAT WASHER	GFS0813	1/2-20 X 1 3/4
WWS09	9/16 FLAT WASHER	GFS0820	1/2-20 X 2
WWS10	5/8 FLAT WASHER	GFS0822	1/2-20 X 2 1/2
GFS0403	1/4-28 X 3/4	GFS0830	1/2-20 X 3
GFS0411	1/4-28 X 1 1/4	GFS0832	1/2-20 X 3 1/2
GFS0412	1/4-28 X 1 1/2	GFS0911	9/16-18 X 1 1/4
GFS0420	1/4-28 X 2	GFS0912	9/16-18 X 1 1/2
GFS0422	1/4-28 X 2 1/2	GFS0913	9/16-18 X 1 3/4
GFS0430	1/4-28 X 3	GFS0920	9/16-18 X 2
GFS0503	5/16-24 X 3/4	GFS0922	9/16-18 X 2 1/2
GFS0510	5/16-24 X 1	GFS0930	9/16-18 X 3
GFS0511	5/16-24 X 1 1/4	GFS0932	9/16-18 X 3 1/2
GFS0512	5/16-24 X 1 1/2	GFS1011	5/8-18 X 1 1/4
GFS0513	5/16-24 X 1 3/4	GFS1012	5/8-18 X 1 1/2
GFS0820	5/16-24 X 2	GFS1013	5/8-18 X 1 3/4
GFS0822	5/16-24 X 2 1/2	GFS1020	5/8-18 X 2
GFS0610	3/8-24 X 1	GFS1022	5/8-18 X 2 1/2
GFS0611	3/8-24 X 1 1/4	GFS1030	5/8-18 X 3
GFS0612	3/8-24 X 1 1/2	GFS1032	5/8-18 X 3 1/2
GFS0613	3/8-24 X 1 3/4		



ITEM #  
LA101

Also shown on page 139



To Order Call: 708-447-4500 or Outside Illinois 800-837-8707

# 1" HEX HEAD CAP SCREWS

USS = COARSE  
SAE = FINE



HEX HEAD CAP SCREWS					
SIZE	BOX QTY	ZINC PLATED		PLAIN	
		GRADE 5		GRADE 8	
		USS	SAE	USS	SAE
1 x 1	5				
1 x 1-1/4	5				
1 x 1-1/2	5	GFU1612			
1 x 1-3/4	5			GEU1613	
1 x 2	5	GFU1620	GFS1620	GEU1620	GES1620
1 x 2-1/4	5	GFU1621			GES1621
1 x 2-1/2	5	GFU1622	GFS1622	GEU1622	GES1622
1 x 2-3/4	5	GFU1623			GES1623
1 x 3	5	GFU1630	GFS1630	GEU1630	GES1630
1 x 3-1/4	5				
1 x 3-1/2	5	GFU1632	GFS1632	GEU1632	GES1632
1 x 4	5	GFU1640	GFS1640	GEU1640	GES1640
1 x 4-1/2	5	GFU1642	GFS1642	GEU1642	GES1642
1 x 5	5	GFU1650	GFS1650	GEU1650	GES1650
1 x 5-1/2	5	GFU1652	GFS1652	GEU1652	GES1652
1 x 6	5	GFU1660	GFS1660	GEU1660	GES1660
				- PLAIN -	
				GRADE 8	
				USS	SAE
1 x 6-1/2	1			GEU1662	GES1662
1 x 7	1			GEU1670	GES1670
1 x 7-1/2	1			GEU1672	GES1672
1 x 8	1			GEU1680	GES1680
1 x 9	1			GEU1690	GES1690
1 x 9-1/2	1			GEU1692	GES1692
1 x 10	1			GEU16100	GES16100
1 x 11	1			GEU16110	GES16110
1 x 11-1/2	1				
1 x 12	1				GES16120
1 X 13	1			GEU16130	

See page 185 for size specifications

INFASCO

To Order Call: 708-447-4500 or Outside Illinois 800-837-8707



# 1-1/8, 1-1/4, & 1-1/2" CAP SCREWS

HEX HEAD CAP SCREWS					
SIZE	BOX QTY	- PLAIN - GRADE 8			
				USS	
1-1/8 x 2-1/2	1			GEU1822	
1-1/8 x 3	1			GEU1830	
1-1/8 x 3-1/2	1			GEU1832	
1-1/8 x 4	1			GEU1840	
1-1/8 x 5	1			GEU1850	
1-1/8 x 5-1/2	1			GEU1852	
1-1/8 x 6	1			GEU1860	
1-1/8 x 10	1			GEU18100	
1-1/4 x 3	1			GEU2030	
1-1/4 x 3-1/2	1			GEU2032	
1-1/4 x 4	1			GEU2040	
1-1/4 x 4-1/2	1			GEU2042	
1-1/4 x 5	1			GEU2050	
1-1/4 x 5-1/2	1			GEU2052	
1-1/4 x 6	1			GEU2060	
1-1/4 x 6-1/2	1			GEU2062	
1-1/4 x 7	1			GEU2070	
1-1/4 x 8	1			GEU2080	
1-1/4 x 9	1			GEU2090	
1-1/4 x 9-1/2	1			GEU2092	
1-1/4 x 10	1			GEU20100	
1-1/2 x 3	1			GEU2430	
1-1/2 x 3-1/2	1			GEU2432	
1-1/2 x 4	1			GEU2440	
1-1/2 x 4-1/2	1			GEU2442	
1-1/2 x 5	1			GEU2450	
1-1/2 x 6	1			GEU2460	
1-1/2 x 6-1/2	1			GEU2462	



USS = COARSE



See page 185 for size specifications

## Also available

- Larger Sizes
- Special Sizes
- Secondary processing
  - Drilling
  - Threading
  - Cutting



To Order Call: 708-447-4500 or Outside Illinois 800-837-8707

# FLANGE BOLTS & NUTS



GRADE 8 USS FLANGE (FRAME) BOLTS		
Hex Washer Head Black Phosphate and Oiled		
DESCRIPTION	BOX QTY	ITEM #
3/8-16 x 1-1/4	25	GEUF0611
3/8-16 x 1-1/2	25	GEUF0612
3/8-16 x 1-3/4	25	GEUF0613
7/16-14 x 1-1/4	25	GEUF0711
1/2-13 x 1-1/4	25	GEUF0811
1/2-13 x 1-1/2	25	GEUF0812
1/2-13 x 1-3/4	25	GEUF0813
1/2-13 x 2	25	GEUF0820
1/2-13 x 2-1/4	25	GEUF0821
1/2-13 x 2-1/2	25	GEUF0822
1/2-13 x 3	25	GEUF0830
1/2-13 x 3-1/2	25	GEUF0832
1/2-13 x 5	25	GEUF0850
5/8-11 x 1-1/4	25	GEUF1011
5/8-11 x 1-1/2	25	GEUF1012
5/8-11 x 1-3/4	25	GEUF1013
5/8-11 x 2	25	GEUF1020
5/8-11 x 2-1/4	25	GEUF1021
5/8-11 x 2-1/2	25	GEUF1022
5/8-11 x 2-3/4	25	GEUF1023
5/8-11 x 3	25	GEUF1030
5/8-11 x 3-1/2	25	GEUF1032
5/8-11 x 4	25	GEUF1040
3/4-10 x 2	25	GEUF1220
3/4-10 x 2-1/2	25	GEUF1222
3/4-10 x 3	25	GEUF1230
3/4-10 x 3-1/2	25	GEUF1232
3/4-10 x 4	25	GEUF1240

See page 185 for size specifications



GR 8.8 METRIC FLANGE BOLTS		
Zinc Hex Washer Head		
DESCRIPTION	BOX QTY	ITEM #
M6 X 1.0 X 12	100	MMHFL0612
M6 X 1.0 X 16	100	MMHFL0616
M6 X 1.0 X 20	25	MMHFL0620
M6 X 1.0 X 25	25	MMHFL0625
M6 X 1.0 X 30	25	MMHFL0630
M6 X 1.0 X 40	25	MMHFL0640
M6 X 1.0 X 60	25	MMHFL0660
M8 X 1.25 X 12	25	MMHFL0812
M8 X 1.25 X 16	25	MMHFL0816
M8 X 1.25 X 20	25	MMHFL0820
M8 X 1.25 X 25	25	MMHFL0825
M8 X 1.25 X 30	25	MMHFL0830
M8 X 1.25 X 35	25	MMHFL0835
M8 X 1.25 X 40	25	MMHFL0840
M8 X 1.25 X 45	25	MMHFL0845
M8 X 1.25 X 50	25	MMHFL0850
M8 X 1.25 X 60	25	MMHFL0860
M8 X 1.25 X 70	25	MMHFL0870
M10 X 1.5 X 20	25	MMHFL1020
M10 X 1.5 X 25	25	MMHFL1025
M10 X 1.5 X 30	25	MMHFL1030
M10 X 1.5 X 50	25	MMHFL1050
M10 X 1.5 X 60	25	MMHFL1060
M10 X 1.5 X 70	25	MMHFL1070
M12 X 1.75 X 25	25	MMHFL1225
M12 X 1.75 X 30	25	MMHFL1230
M12 X 1.75 X 60	25	MMHFL1260
M16 X 2.0 X 20	25	MMHFL1630
M16 X 2.0 X 20	25	MMHFL1660

METRIC STOVER NUTS		
SIZE	QTY	ITEM #
M10 -1.5	25	MMHNCST10
M12 -1.75	25	MMHNCST12
M14 -2.0	25	MMHNCST14
M16 -2.0	25	MMHNCST16
M20 -2.50	25	MMHNCST20



METRIC FLANGE NUTS		
SIZE	QTY	ITEM #
M6 -1.00	25	MMHNCF06
M8 -1.25	25	MMHNCF08
M10 -1.50	25	MMHNCF10
M12 -1.75	25	MMHNCF12
M14 -1.00	25	MMHNCF14

To Order Call: 708-447-4500 or Outside Illinois 800-837-8707



# METRIC

HEX & NYLOCK NUTS - METRIC					
SIZE	THREAD PITCH	BOX QTY	8.8 ITEM #	10.9 ITEM #	NYLOCK NUT ITEM #
3MM Coarse		25	MMHNC03		MMHNCNY03
4MM Coarse	.07	25	MMHNC04		MMHNCNY04
5MM Coarse	.08	25	MMHNC05	MM10HNC05	MMHNCNY05
6MM Coarse	1.0	25	MMHNC06	MM10HNC06	MMHNCNY06
7MM Coarse	1.0	25	MMHNC07	MM10HNC07	MMHNCNY07Z
8MM Coarse	1.25	25	MMHNC08	MM10HNC08	MMHNCNY08
10MM Coarse	1.5	25	MMHNC10	MM10HNC10	MMHNCNY10
12MM Coarse	1.75	25	MMHNC12	MM10HNC12	MMHNCNY12
14MM Coarse	2.0	25	MMHNC14	MM10HNC14	MMHNCNY14
6MM Coarse	2.0	25	MMHNC16	MM10HNC16	MMHNCNY16
18MM Coarse	2.5	25	MMHNC18	MM10HNC18	MMHNCNY18
20MM Coarse	2.5	25	MMHNC20	MM10HNC20	MMHNCNY20
24MM Coarse	3	25		MM10HNC24	MMHNCNY24
6MM Fine	.75	25	MMHNF06	MM10HNF06	
8MM Fine	1.0	25	MMHNF08	MM10HNF08	
10MM Fine	1.25	25	MMHNF10	MM10HNF10	
12MM Fine	1.5	25	MMHNF12	MM10HNF12	
14MM Fine	1.5	25	MMHNF14	MM10HNF14	
16MM Fine	1.5	25	MMHNF16	MM10HNF16	
18MM Fine	1.5	25	MMHNF18	MM10HNF18	
20MM Fine	1.0	25	MMHNF20		
22MM Fine	2.0	25	MMHNF22		
10MM X-tra Fine	1.00	25	MMHNXF10		
12MM X-tra Fine	1.25	25	MMHNXF12	MM10HNXF12	
22MM X-tra Fine	1.5	25	MMHNXF22		



WASHERS - METRIC - FLAT & LOCK					
		FLAT WASHERS		LOCK WASHERS	
SIZE	QTY	8.8 ITEM #	10.9 ITEM #	QTY	ITEM #
3MM	50	MMWW03		100	MMLW03
4MM	50	MMWW04		100	MMLW04
5MM	50	MMWW05	MM10WW05	100	MMLW05
6MM	50	MMWW06	MM10WW06	100	MMLW06
7MM	50	MMWW07		100	MMLW07
8MM	50	MMWW08	MM10WW08	100	MMLW08
10MM	50	MMWW10	MM10WW10	100	MMLW10
12MM	50	MMWW12	MM10WW12	100	MMLW12
14MM	50	MMWW14	MM10WW14	100	MMLW14
16MM	25	MMWW16	MM10WW16	100	MMLW16
18MM	25	MMWW18	MM10WW18	100	MMLW18
20MM	25	MMWW20	MM10WW20	50	MMLW20
22MM	10	MMWW22			
24MM	10	MMWW24			MMLW24



To Order Call: 708-447-4500 or Outside Illinois 800-837-8707

# 8.8 METRIC HEX HEAD CAP SCREWS



COARSE METRIC HEX HEAD CAP SCREWS GRADE 8.8 - PLAIN											
SIZE	QTY	ITEM #	PITCH	SIZE	QTY	ITEM #	PITCH	SIZE	QTY	ITEM #	PITCH
5x20MM	25	MMHCC0520	.08	8x10MM	25	MMHCC0810	1.25	14x20MM	25	MMHCC1420	2.0
5x25MM	25	MMHCC0525	.08	8x12MM	25	MMHCC0812	1.25	14x25MM	25	MMHCC1425	2.0
5x30MM	25	MMHCC0530	.08	8x16MM	25	MMHCC0816	1.25	14x30MM	25	MMHCC1430	2.0
5x35MM	25	MMHCC0535	.08	8x20MM	25	MMHCC0820	1.25	14x35MM	25	MMHCC1435	2.0
5x40MM	25	MMHCC0540	.08	8x25MM	25	MMHCC0825	1.25	14x40MM	25	MMHCC1440	2.0
5x55MM	25	MMHCC0555	.08	8x30MM	25	MMHCC0830	1.25	14x45MM	25	MMHCC1445	2.0
6x10MM	25	MMHCC0610	1.0	8x35MM	25	MMHCC0835	1.25	14x50MM	25	MMHCC1450	2.0
6x12MM	25	MMHCC0612	1.0	8x40MM	25	MMHCC0840	1.25	14x60MM	25	MMHCC1460	2.0
6x16MM	25	MMHCC0616	1.0	8x45MM	25	MMHCC0845	1.25	14x65MM	25	MMHCC1465	2.0
6x20MM	25	MMHCC0620	1.0	8x50MM	25	MMHCC0850	1.25	14x70MM	25	MMHCC1470	2.0
6x25MM	25	MMHCC0625	1.0	8x55MM	25	MMHCC0855	1.25	14x80MM	25	MMHCC1480	2.0
6x30MM	25	MMHCC0630	1.0	8x60MM	25	MMHCC0860	1.25	14x90MM	25	MMHCC1490	2.0
6x35MM	25	MMHCC0635	1.0	8x65MM	25	MMHCC0865	1.25	14x100MM	25	MMHCC14100	2.0
6x40MM	25	MMHCC0640	1.0	8x70MM	25	MMHCC0870	1.25	14x110MM	25	MMHCC14110	2.0
6x45MM	25	MMHCC0645	1.0	8x75MM	25	MMHCC0875	1.25	16x20MM	10	MMHCC1620	2.0
6x50MM	25	MMHCC0650	1.0	8x80MM	25	MMHCC0880	1.25	16x30MM	10	MMHCC1630	2.0
6x55MM	25	MMHCC0655	1.0	8x90MM	25	MMHCC0890	1.25	16x40MM	10	MMHCC1640	2.0
6x60MM	25	MMHCC0660	1.0	10x20MM	25	MMHCC1020	1.5	16x50MM	10	MMHCC1650	2.0
6x70MM	25	MMHCC0670	1.0	10x30MM	25	MMHCC1030	1.5	16x60MM	10	MMHCC1660	2.0
7x12MM	25	MMHCC0712	1.0	10x40MM	25	MMHCC1040	1.5	16x70MM	10	MMHCC1670	2.0
7x16MM	25	MMHCC0716	1.0	10x50MM	25	MMHCC1050	1.5	16x80MM	10	MMHCC1680	2.0
7x20MM	25	MMHCC0720	1.0	10x60MM	25	MMHCC1060	1.5	16x100MM	10	MMHCC16100	2.0
7x25MM	25	MMHCC0725	1.0	12x30MM	25	MMHCC1230	1.75	16x110MM	10	MMHCC16110	2.0
7x30MM	25	MMHCC0730	1.0	12x40MM	25	MMHCC1240	1.75	18x40MM	10	MMHCC1840	2.0
7x40MM	25	MMHCC0740	1.0	12x50MM	25	MMHCC1250	1.75	18x50MM	10	MMHCC1850	2.0
7x50MM	25	MMHCC0750	1.0	12x60MM	25	MMHCC1260	1.75	20x50MM	10	MMHCC2050	2.5
7x70MM	25	MMHCC0770	1.0	12x70MM	25	MMHCC1270	1.75	20x60MM	10	MMHCC2060	2.5
				12x80MM	25	MMHCC1280	1.75	20x80MM	10	MMHCC2080	2.5
				12x90MM	25	MMHCC1290	1.75	20x90MM	10	MMHCC2090	2.5
				12x100MM	25	MMHCC12100	1.75				

Additional sizes available

For ZINC plated - Add Z after part number

### THE LA105 8.8 COARSE & FINE ASSORTMENT CONTAINS:

ITEM #	DESCRIPTION	ITEM #	DESCRIPTION
MMHCC0620	6MM - 1.0 X 20	MMHCF1230	12MM X 1.50 X 30
MMHCC0630	6MM - 1.0 X 30	MMHCF1240	12MM X 1.50 X 40
MMHCC0640	6MM - 1.0 X 40	MMHCF1250	12MM X 1.50 X 50
MMHCC0650	6MM - 1.0 X 50	MMHCF1260	12MM X 1.50 X 60
MMHCC0660	6MM - 1.0 X 60	MMHCF1270	12MM X 1.50 X 70
MMHCC0816	8MM - 1.25 X 16	MMHCF1435	14MM X 1.50 X 35
MMHCC0820	8MM - 1.25 X 20	MMHCF1440	14MM X 1.50 X 40
MMHCC0830	8MM - 1.25 X 30	MMHCF1450	14MM X 1.50 X 50
MMHCC0840	8MM - 1.25 X 40	MMHCF1460	14MM X 1.50 X 60
MMHCC0850	8MM - 1.25 X 50	MMHCF1470	14MM X 1.50 X 70
MMHCC0860	8MM - 1.25 X 60	MMHCF1630	16MM X 1.50 X 30
MMHCC1020	10MM - 1.50 X 20	MMHCF1640	16MM X 1.50 X 40
MMHCC1030	10MM - 1.50 X 30	MMHCF1650	16MM X 1.50 X 50
MMHCC1040	10MM - 1.50 X 40	MMHCF1660	16MM X 1.50 X 60
MMHCC1050	10MM - 1.50 X 50	MMHCF1670	16MM X 1.50 X 70
MMHCC1060	10MM - 1.50 X 60	MMHNC06	HEX NUT 6MM X 1.00
MMHCC1070	10MM - 1.50 X 70	MMHNC08	HEX NUT 8MM X 1.25
MMHCC1225	12MM X 1.75 X 25	MMHNC10	HEX NUT 10MM X 1.50
MMHCC1230	12MM X 1.75 X 30	MMHNC12	HEX NUT 12MM X 1.75
MMHCC1240	12MM X 1.75 X 40	MMHNF08	HEX NUT 8MM X 1.00
MMHCC1250	12MM X 1.75 X 50	MMHNF10	HEX NUT 10MM X 1.25
MMHCC1260	12MM X 1.75 X 60	MMHNF12	HEX NUT 12MM X 1.50
MMHCC1270	12MM X 1.75 X 70	MMHNF14	HEX NUT 14MM X 1.50
MMHCF0816	8MM X 1.00 X 16	MMHNF16	HEX NUT 16MM X 1.50
MMHCF0820	8MM X 1.00 X 20	MMLW06	LOCKWASHER 6MM
MMHCF0825	8MM X 1.00 X 25	MMLW08	LOCKWASHER 8MM
MMHCF0830	8MM X 1.00 X 30	MMLW10	LOCKWASHER 10MM
MMHCF0840	8MM X 1.00 X 40	MMLW12	LOCKWASHER 12MM
MMHCF0850	8MM X 1.00 X 50	MMLW14	LOCKWASHER 14MM
MMHCF1020	10MM X 1.25 X 20	MMLW16	LOCKWASHER 16MM
MMHCF1025	10MM X 1.25 X 25	MMWW06	FLATWASHER 6MM
MMHCF1030	10MM X 1.25 X 30	MMWW08	FLATWASHER 8MM
MMHCF1040	10MM X 1.25 X 40	MMWW10	FLATWASHER 10MM
MMHCF1050	10MM X 1.25 X 50	MMWW12	FLATWASHER 12MM
MMHCF1060	10MM X 1.25 X 60	MMWW14	FLATWASHER 14MM
MMHCF1225	12MM X 1.50 X 25	MMWW16	FLATWASHER 16MM



ITEM #  
LA105

Also shown on page 142

To Order Call: 708-447-4500 or Outside Illinois 800-837-8707





# 8.8 METRIC HEX HEAD CAP SCREWS

FINE & XTRA FINE METRIC HEX HEAD CAP SCREWS GRADE 8.8 - PLAIN											
SIZE	QTY	ITEM #	PITCH	SIZE	QTY	ITEM #	PITCH	SIZE	QTY	ITEM #	PITCH
8x10MM	25	MMHCF0810	1.0	12x40MM	25	MMHCF1240	1.5	18x40MM	10	MMHCF1840	1.5
8x16MM	25	MMHCF0816	1.0	12x45MM	25	MMHCF1245	1.5	18x50MM	10	MMHCF1850	1.5
8x20MM	25	MMHCF0820	1.0	12x50MM	25	MMHCF1250	1.5	18x60MM	10	MMHCF1860	1.5
8x25MM	25	MMHCF0825	1.0	12x55MM	25	MMHCF1255	1.5	18x70MM	10	MMHCF1870	1.5
8x30MM	25	MMHCF0830	1.0	12x60MM	25	MMHCF1260	1.5	18x80MM	10	MMHCF1880	1.5
8x35MM	25	MMHCF0835	1.0	12x70MM	25	MMHCF1270	1.5	<b>XTRA FINE THREAD</b>			
8x40MM	25	MMHCF0840	1.0	12x80MM	25	MMHCF1280	1.5	10x20MM	25	MMHCXF1020	1.0
8x45MM	25	MMHCF0845	1.0	12x90MM	25	MMHCF1290	1.5	10x25MM	25	MMHCXF1025	1.0
8x50MM	25	MMHCF0850	1.0	14x25MM	25	MMHCF1425	1.5	10x30MM	25	MMHCXF1030	1.0
8x55MM	25	MMHCF0855	1.0	14x30MM	25	MMHCF1430	1.5	10x35MM	25	MMHCXF1035	1.0
8x60MM	25	MMHCF0860	1.0	14x35MM	25	MMHCF1435	1.5	10x40MM	25	MMHCXF1040	1.0
10x15MM	25	MMHCF1015	1.25	14x40MM	25	MMHCF1440	1.5	10x45MM	25	MMHCXF1045	1.0
10x16MM	25	MMHCF1016	1.25	14x50MM	25	MMHCF1450	1.5	10x50MM	25	MMHCXF1050	1.0
10x20MM	25	MMHCF1020	1.25	14x60MM	25	MMHCF1460	1.5	10x55MM	25	MMHCXF1055	1.0
10x25MM	25	MMHCF1025	1.25	14x70MM	25	MMHCF1470	1.5	10x60MM	25	MMHCXF1060	1.0
10x30MM	25	MMHCF1030	1.25	14x80MM	25	MMHCF1480	1.5	10x70MM	25	MMHCXF1070	1.0
10x35MM	25	MMHCF1035	1.25	14x100MM	25	MMHCF14100	1.5	12x20MM	25	MMHCXF1220	1.25
10x40MM	25	MMHCF1040	1.25	16x20MM	10	MMHCF1620	1.5	12x25MM	25	MMHCXF1225	1.25
10x45MM	25	MMHCF1045	1.25	16x30MM	10	MMHCF1630	1.5	12x30MM	25	MMHCXF1230	1.25
10x50MM	25	MMHCF1050	1.25	16x35MM	10	MMHCF1635	1.5	12x35MM	25	MMHCXF1235	1.25
10x55MM	25	MMHCF1055	1.25	16x40MM	10	MMHCF1640	1.5	12x40MM	25	MMHCXF1240	1.25
10x60MM	25	MMHCF1060	1.25	16x45MM	10	MMHCF1645	1.5	12x45MM	25	MMHCXF1245	1.25
10x70MM	25	MMHCF1070	1.25	16x50MM	10	MMHCF1650	1.5	12x50MM	25	MMHCXF1250	1.25
10x80MM	25	MMHCF1080	1.25	16x60MM	10	MMHCF1660	1.5	12x55MM	25	MMHCXF1255	1.25
12x20MM	25	MMHCF1220	1.5	16x70MM	10	MMHCF1670	1.5	12x60MM	25	MMHCXF1260	1.25
12x25MM	25	MMHCF1225	1.5	16x80MM	10	MMHCF1680	1.5	12x65MM	25	MMHCXF1265	1.25
12x30MM	25	MMHCF1230	1.5	18x30MM	10	MMHCF1830	1.5	12x70MM	25	MMHCXF1270	1.25
12x35MM	25	MMHCF1235	1.5	18x35MM	10	MMHCF1835	1.5	20x100MM	25	MMHCXF20100	1.25



For ZINC plated - Add Z after part number

Additional sizes available

**The LA160 Coarse Metric 8.8 Pan Assortment contains the following items:**

- MMHNC06, MMHNC08, MMHNC10, MMHNC12,
- MMWW06, MMWW08, MMWW10, MMWW12,
- MMLW06, MMLW08, MMLW10, MMLW12,
- MMHCC0612, MMHCC0625, MMHCC0630,
- MMHCC0640, MMHCC0816, MMHCC0825,
- MMHCC0840, MMHCC0850, MMHCC1025,
- MMHCC1040, MMHCC1050,
- MMHCC1060, MMHCC1230, MMHCC1240,
- MMHCC1250, MMHCC1275

ITEM #  
LA160



**The LA161 Fine Metric 8.8 Pan Assortment contains the following items:**

- MMHCF0816, MMHCF0825, MMHCF0840,
- MMHCF0850, MMHCF1025, MMHCF1040,
- MMHCF1050, MMHCF1060, MMHCF1230,
- MMHCF1240, MMHCF1250, MMHCF1270,
- MMHCF1430, MMHCF1440, MMHCF1460,
- MMHCF1470, MMHNF08, MMHNF10,
- MMHNF12, MMHNF14, MMLW08, MMLW10,
- MMLW12, MMLW14, MMWW08, MMWW10,
- MMWW12, MMWW14

ITEM #  
LA161



To Order Call: 708-447-4500 or Outside Illinois 800-837-8707

# 10.9 METRIC HEX HEAD CAP SCREWS



COARSE METRIC HEX HEAD CAP SCREWS GRADE 10.9 - PLAIN											
SIZE	QTY	ITEM #	PITCH	SIZE	QTY	ITEM #	PITCH	SIZE	QTY	ITEM #	PITCH
6x12MM	25	MM10HCC0612	1.0	10x45MM	25	MM10HCC1045	1.5	14x110MM	25	MM10HCC14110	2.0
6x15MM	25	MM10HCC0615	1.0	10x50MM	25	MM10HCC1050	1.5	16x20MM	10	MM10HCC1620	2.0
6x16MM	25	MM10HCC0616	1.0	10x60MM	25	MM10HCC1060	1.5	16x30MM	10	MM10HCC1630	2.0
6x20MM	25	MM10HCC0620	1.0	10x70MM	25	MM10HCC1070	1.5	16x35MM	10	MM10HCC1635	2.0
6x25MM	25	MM10HCC0625	1.0	10x75MM	25	MM10HCC1075	1.5	16x40MM	10	MM10HCC1640	2.0
6x30MM	25	MM10HCC0630	1.0	10x80MM	25	MM10HCC1080	1.5	16x45MM	10	MM10HCC1645	2.0
6x35MM	25	MM10HCC0635	1.0	10x90MM	25	MM10HCC1090	1.5	16x50MM	10	MM10HCC1650	2.0
6x40MM	25	MM10HCC0640	1.0	12x20MM	25	MM10HCC1220	1.75	16x60MM	10	MM10HCC1660	2.0
6x45MM	25	MM10HCC0645	1.0	12x25MM	25	MM10HCC1225	1.75	16x65MM	10	MM10HCC1665	2.0
6x50MM	25	MM10HCC0650	1.0	12x30MM	25	MM10HCC1230	1.75	16x70MM	10	MM10HCC1670	2.0
6x55MM	25	MM10HCC0655	1.0	12x35MM	25	MM10HCC1235	1.75	16x75MM	10	MM10HCC1675	2.0
6x60MM	25	MM10HCC0660	1.0	12x40MM	25	MM10HCC1240	1.75	16x80MM	10	MM10HCC1680	2.0
6x70MM	25	MM10HCC0670	1.0	12x45MM	25	MM10HCC1245	1.75	16x90MM	10	MM10HCC1690	2.0
8x12MM	25	MM10HCC0812	1.25	12x50MM	25	MM10HCC1250	1.75	16x100MM	10	MM10HCC16100	2.0
8x16MM	25	MM10HCC0816	1.25	12x55MM	25	MM10HCC1255	1.75	16x110MM	10	MM10HCC16110	2.0
8x20MM	25	MM10HCC0820	1.25	12x60MM	25	MM10HCC1260	1.75	18x30MM	10	MM10HCC1830	2.5
8x25MM	25	MM10HCC0825	1.25	12x70MM	25	MM10HCC1270	1.75	18x40MM	10	MM10HCC1840	2.5
8x30MM	25	MM10HCC0830	1.25	12x80MM	25	MM10HCC1280	1.75	18x45MM	10	MM10HCC1845	2.5
8x35MM	25	MM10HCC0835	1.25	12x90MM	25	MM10HCC1290	1.75	18x50MM	10	MM10HCC1850	2.5
8x40MM	25	MM10HCC0840	1.25	14x20MM	25	MM10HCC1420	2.0	18x60MM	10	MM10HCC1860	2.5
8x45MM	25	MM10HCC0845	1.25	14x25MM	25	MM10HCC1425	2.0	18x70MM	10	MM10HCC1870	2.5
8x50MM	25	MM10HCC0850	1.25	14x30MM	25	MM10HCC1430	2.0	18x80MM	10	MM10HCC1880	2.5
8x60MM	25	MM10HCC0860	1.25	14x35MM	25	MM10HCC1435	2.0	18x90MM	10	MM10HCC1890	2.5
8x70MM	25	MM10HCC0870	1.25	14x40MM	25	MM10HCC1440	2.0	20x40MM	10	MM10HCC20040	2.5
8x80MM	25	MM10HCC0880	1.25	14x45MM	25	MM10HCC1445	2.0	20x50MM	10	MM10HCC20050	2.5
10x16MM	25	MM10HCC1016	1.5	14x50MM	25	MM10HCC1450	2.0	20x60MM	10	MM10HCC20060	2.5
10x20MM	25	MM10HCC1020	1.5	14x60MM	25	MM10HCC1460	2.0	20x70MM	10	MM10HCC20070	2.5
10x25MM	25	MM10HCC1025	1.5	14x70MM	25	MM10HCC1470	2.0	20x80MM	10	MM10HCC20080	2.5
10x30MM	25	MM10HCC1030	1.5	14x80MM	25	MM10HCC1480	2.0	20x90MM	10	MM10HCC20090	2.5
10x35MM	25	MM10HCC1035	1.5	14x90MM	25	MM10HCC1490	2.0	20x100MM	10	MM10HCC20100	2.5
10x40MM	25	MM10HCC1040	1.5	14x100MM	25	MM10HCC14100	2.0				

Additional sizes available

For ZINC plated -  
Add Z after part number



ITEM #  
LA106

Also shown on page 142

### THE LA106 10.9 COARSE & FINE ASSORTMENT CONTAINS

ITEM #	DESCRIPTION	ITEM #	DESCRIPTION
MM10HCC0620	6MM -1 X 20	MM10HCF1240	12MM -1.50 X 40
MM10HCC0630	6MM -1 X 30	MM10HCF1250	12MM -1.50 X 50
MM10HCC0640	6MM -1 X 40	MM10HCF1260	12MM -1.50 X 60
MM10HCC0650	6MM -1 X 50	MM10HCF1270	12MM -1.50 X 70
MM10HCC0660	6MM -1 X 60	MM10HCF1435	14MM -1.50 X 35
MM10HCC0816	8MM -1.25 X 16	MM10HCF1440	14MM -1.50 X 40
MM10HCC0820	8MM -1.25 X 20	MM10HCF1450	14MM -1.50 X 50
MM10HCC0830	8MM -1.25 X 30	MM10HCF1460	14MM -1.50 X 60
MM10HCC0840	8MM -1.25 X 40	MM10HCF1470	14MM -1.50 X 70
MM10HCC0850	8MM -1.25 X 50	MM10HCF1630	16MM -1.50 X 30
MM10HCC0860	8MM -1.25 X 60	MM10HCF1640	16MM -1.50 X 40
MM10HCC1020	10MM -1.50 X 20	MM10HCF1650	16MM -1.50 X 50
MM10HCC1030	10MM -1.50 X 30	MM10HCF1660	16MM -1.50 X 60
MM10HCC1040	10MM -1.50 X 40	MM10HCF1670	16MM -1.50 X 70
MM10HCC1050	10MM -1.50 X 50	MM10HNC06	HEX NUT 6MM -1
MM10HCC1060	10MM -1.50 X 60	MM10HNC08	HEX NUT 8MM -1.25
MM10HCC1070	10MM -1.50 X 70	MM10HNC10	HEX NUT 10MM -1.5
MM10HCC1225	12MM -1.75 X 25	MM10HNC12	HEX NUT 12MM -1.75
MM10HCC1230	12MM -1.75 X 30	MM10HNC14	HEX NUT 14MM -2.00
MM10HCC1240	12MM -1.75 X 40	MM10HNC16	HEX NUT 16MM -2.00
MM10HCC1250	12MM -1.75 X 50	MM10HNF8	HEX NUT 8MM -1.00
MM10HCC1260	12MM -1.75 X 60	MM10HNF10	HEX NUT 10MM -1.25
MM10HCC1270	12MM -1.75 X 70	MM10HNF12	HEX NUT 12MM -1.50
MM10HCF0810	8MM -1 X 10	MM10HNF14	HEX NUT 14MM -1.50
MM10HCF0820	8MM -1 X 20	MM10HNF16	HEX NUT 16MM -1.50
MM10HCF0825	8MM -1 X 25	MM10WW08	FLAT WASHER 8MM
MM10HCF0830	8MM -1 X 30	MM10WW10	FLAT WASHER 10MM
MM10HCF0840	8MM -1 X 40	MM10WW12	FLAT WASHER 12MM
MM10HCF0850	8MM -1 X 50	MM10WW14	FLAT WASHER 14MM
MM10HCF1020	10MM -1.25 X 20	MMWW16	FLAT WASHER 16MM
MM10HCF1025	10MM -1.25 X 25	MMLW06	LOCKWASHER 6MM
MM10HCF1030	10MM -1.25 X 30	MMLW08	LOCKWASHER 8MM
MM10HCF1040	10MM -1.25 X 40	MMLW10	LOCKWASHER 10MM
MM10HCF1050	10MM -1.25 X 50	MMLW12	LOCKWASHER 12MM
MM10HCF1060	10MM -1.25 X 60	MMLW14	LOCKWASHER 14MM
MM10HCF1225	12MM -1.50 X 25	MMLW16	LOCKWASHER 16MM
MM10HCF1230	12MM -1.50 X 30		

To Order Call: 708-447-4500 or Outside Illinois 800-837-8707



# 10.9 METRIC HEX HEAD CAP SCREWS

FINE & XTRA FINE METRIC HEX HEAD CAP SCREWS GRADE 10.9 - PLAIN											
SIZE	QTY	ITEM #	PITCH	SIZE	QTY	ITEM #	PITCH	SIZE	QTY	ITEM #	PITCH
8x10MM	25	MM10HCF0810	1.0	12x100MM	25	MM10HCF12100	1.5	<b>XTRA FINE THREAD</b>			
8x16MM	25	MM10HCF0816	1.0	14x30MM	25	MM10HCF1430	1.5	10x40MM	25	MM10HCXF1040	1.0
8x20MM	25	MM10HCF0820	1.0	14x35MM	25	MM10HCF1435	1.5	12x20MM	25	MM10HCXF1220	1.25
8x25MM	25	MM10HCF0825	1.0	14x40MM	25	MM10HCF1440	1.5	12x25MM	25	MM10HCXF1225	1.25
8x30MM	25	MM10HCF0830	1.0	14x45MM	25	MM10HCF1445	1.5	12x30MM	25	MM10HCXF1230	1.25
8x40MM	25	MM10HCF0840	1.0	14x50MM	25	MM10HCF1450	1.5	12x35MM	25	MM10HCXF1235	1.25
8x45MM	25	MM10HCF0845	1.0	14x60MM	25	MM10HCF1460	1.5	12x40MM	25	MM10HCXF1240	1.25
8x50MM	25	MM10HCF0850	1.0	14x70MM	25	MM10HCF1470	1.5	12x50MM	25	MM10HCXF1250	1.25
10x20MM	25	MM10HCF1020	1.25	14x75MM	25	MM10HCF1475	1.5	12x60MM	25	MM10HCXF1260	1.25
10x25MM	25	MM10HCF1025	1.25	14x80MM	25	MM10HCF1480	1.5				
10x30MM	25	MM10HCF1030	1.25	14x90MM	25	MM10HCF1490	1.5				
10x35MM	25	MM10HCF1035	1.25	14x100MM	5	MM10HCF14100	1.5				
10x40MM	25	MM10HCF1040	1.25	14x120MM	5	MM10HCF14120	1.5				
10x50MM	25	MM10HCF1050	1.25	16x20MM	10	MM10HCF1620	1.5				
10x55MM	25	MM10HCF1055	1.25	16x30MM	10	MM10HCF1630	1.5				
10x60MM	25	MM10HCF1060	1.25	16x40MM	10	MM10HCF1640	1.5				
12x25MM	25	MM10HCF1225	1.5	16x45MM	10	MM10HCF1645	1.5				
12x30MM	25	MM10HCF1230	1.5	16x50MM	10	MM10HCF1650	1.5				
12x35MM	25	MM10HCF1235	1.5	16x60MM	10	MM10HCF1660	1.5				
12x40MM	25	MM10HCF1240	1.5	16x70MM	10	MM10HCF1670	1.5				
12x50MM	25	MM10HCF1250	1.5	16x120MM	5	MM10HCF16120	1.5				
12x60MM	25	MM10HCF1260	1.5	18x55MM	10	MM10HCF1855	1.5				
12x70MM	25	MM10HCF1270	1.5	18x110MM	10	MM10HCF18110	1.5				
12x75MM	25	MM10HCF1275	1.5	20x75MM	10	MM10HCF2075	1.5				



For ZINC plated -  
Add Z after part number

Additional sizes available

ITEM #  
LA164



**The LA164 Coarse Metric 10.9 Pan Assortment contains the following items:**

MM10HNC06, MM10HNC08, MM10HNC10, MM10HNC12,  
MM10WW06, MM10WW08, MM10WW10, MM10WW12,  
MMLW06, MMLW08, MMLW10, MMLW12, MM10HCC0612,  
MM10HCC0625, MM10HCC0630, MM10HCC0640,  
MM10HCC0816, MM10HCC0825, MM10HCC0840,  
MM10HCC0850, MM10HCC1025, MM10HCC1040,  
MM10HCC1050, MM10HCC1060, MM10HCC1230,  
MM10HCC1240, MM10HCC1250, MM10HCC1275

ITEM #  
LA163



**The LA163 Fine Metric 10.9 Pan Assortment contains the following items:**

MM10HNF06, MM10HNF08, MM10HNF10, MM10HNF12,  
MM10WW06, MM10WW08, MM10WW10, MM10WW12,  
MMLW06, MMLW08, MMLW10, MMLW12, MM10HCF0612,  
MM10HCF0625, MM10HCF0630, MM10HCF0640,  
MM10HCF0816, MM10HCF0825, MM10HCF0840,  
MM10HCF0850, MM10HCF1025, MM10HCF1040,  
MM10HCF1050, MM10HCF1060, MM10HCF1230,  
MM10HCF1240, MM10HCF1250, MM10HCF1275



To Order Call: 708-447-4500 or Outside Illinois 800-837-8707

# SOCKET HEAD CAP SCREWS

## SOCKET HEAD CAP SCREWS - Plain

SIZE	BOX QTY	ROUND HEAD	FLAT HEAD	BUTTON HEAD
1/4-20x1/2	100	SKTU0402	SKTFU0402	SKTBU0402
1/4-20x3/4	100	SKTU0403	SKTFU0403	SKTBU0403
1/4-20x1	100	SKTU0410	SKTFU0410	SKTBU0410
1/4-20x1-1/4	100	SKTU0411	SKTFU0411	
1/4-20x1-1/2	100	SKTU0412	SKTFU0412	
1/4-20x1-3/4	100	SKTU0413	SKTFU0413	
1/4-20x2	100	SKTU0420	SKTFU0420	
1/4-20x2 -1/2	100	SKTU0422		
1/4-20x3	100	SKTU0430		
5/16-18x1/2	100	SKTU0502	SKTFU0502	SKTBU0502
5/16-18x3/4	100	SKTU0503	SKTFU0503	SKTBU0503
5/16-18x1	100	SKTU0510	SKTFU0510	SKTBU0510
5/16-18x1-1/4	100	SKTU0511	SKTFU0511	
5/16-18x1-1/2	100	SKTU0512	SKTFU0512	
5/16-18x1-3/4	100	SKTU0513	SKTFU0513	
5/16-18x2	100	SKTU0520	SKTFU0520	
5/16-18x2-1/2	100	SKTU0522		
5/16-18x3	100	SKTU0530	SKTFU0530	
5/16-18x3-1/2	100	SKTU0532	SKTFU0532	
5/16-18x4	100	SKTU0540	SKTFU0540	
3/8-16x1/2	100	SKTU0602		SKTBU0602
3/8-16x3/4	100	SKTU0603	SKTFU0603	SKTBU0603
3/8-16x1	100	SKTU0610	SKTFU0610	SKTBU0610
3/8-16x1-1/4	100	SKTU0611	SKTFU0611	SKTBU0611
3/8-16x1-1/2	100	SKTU0612	SKTFU0612	
3/8-16x2	100	SKTU0620	SKTFU0620	
3/8-16x2-1/2	50	SKTU0622	SKTFU0622	
3/8-16x3	50	SKTU0630	SKTFU0630	
3/8-16x3-1/2	50	SKTU0632		
3/8-16x4	50	SKTU0640	SKTFU0640	
7/16-14x1	100	SKTU0710	SKTFU0710	
7/16-14x1-1/4	100	SKTU0711	SKTFU0711	
7/16-14x1-1/2	100	SKTU0712	SKTFU0712	
7/16x14x2	50	SKTU0720	SKTFU0720	
7/16-14x2-1/2	50	SKTU0722		
7/16-14x3	50	SKTU0730	SKTFU0730	
7/16-14x3-1/2	50	SKTU0732		
7/16-14x4	50	SKTU0740	SKTFU0740	
1/2-13x1	50	SKTU0810	SKTFU0810	SKTBU0810
1/2-13x1-1/4	50	SKTU0811	SKTFU0811	SKTBU0811
1/2-13x1-1/2	50	SKTU0812	SKTFU0812	SKTBU0812
1/2-13x2	50	SKTU0820	SKTFU0820	SKTBU0820
1/2-13x2-1/2	50	SKTU0822	SKTFU0822	
1/2-13x3	50	SKTU0830	SKTFU0830	
1/2-13x3-1/2	50	SKTU0832	SKTFU0832	
1/2-13x4	25	SKTU0840	SKTFU0840	
5/8-11x1-1/4	50	SKTU1011	SKTFU1011	SKTBU1011
5/8-11x1-1/2	50	SKTU1012	SKTFU1012	SKTBU1012
5/8-11x2	50	SKTU1020	SKTFU1020	SKTBU1020
5/8-11x2-1/2	25	SKTU1022	SKTFU1022	
5/8-11x3	25	SKTU1030	SKTFU1030	
5/8-11x3-1/2	25	SKTU1032		
5/8-11x4	25	SKTU1040		



Round Head



Flat Head



Button Head

Additional sizes available

To Order Call: 708-447-4500 or Outside Illinois 800-837-8707



# CARRIAGE BOLTS

FULL-THREAD CARRIAGE BOLTS - ZINC PLATED				
LENGTH	1/4 - 20	5/16 - 18	3/8 - 16	1/2 - 13
3/4	CB0403	CB0503		
1	CB0410	CB0510	CB0610	
1-1/4	CB0411	CB0511	CB0611	CB0811
1-1/2	CB0412	CB0512	CB0612	CB0812
1-3/4			CB0613	
2	CB0420	CB0520	CB0620	CB0820
2-1/4			CB0621	
2-1/2	CB0422	CB0522	CB0622	CB0822
2-3/4			CB0623	
3	CB0430	CB0530	CB0630	CB0830
3-1/4			CB0631	
3-1/2	CB0432	CB0532	CB0632	
4	CB0440	CB0540	CB0640	CB0840
4-1/2	CB0442	CB0542	CB0642	CB0842
5	CB0450	CB0550	CB0650	CB0850
5-1/2	CB0452	CB0552	CB0652	
PARTIAL-THREAD CARRIAGE BOLTS - ZINC PLATED				
6	CB0460	CB0560	CB0660	CB0860
7	CB0470		CB0670	
8	CB0480		CB0680	CB0880
10				CB08100
12				CB08120



RIB-NECK CARRIAGE BOLTS - ZINC PLATED		
DESCRIPTION	ITEM #	BOX QTY
1/4-20 x 1	CBRN0410	100
1/4-20 x 1-1/4	CBRN0411	100
1/4-20 x 1-1/2	CBRN0412	100
1/4-20 x 2	CBRN0420	100
1/4-20 x 3	CBRN0430	100
5/16-18 x 1	CBRN0510	100
5/16-18 x 1-1/4	CBRN0511	100
5/16-18 x 1-1/2	CBRN0512	100
5/16-18 x 2	CBRN0520	100
5/16-18 x 2-1/2	CBRN0522	100
5/16-18 x 3	CBRN0530	100
3/8-16 x 1-1/4	CBRN0611	100
3/8-16 x 1-1/2	CBRN0612	100
3/8-16 x 2	CBRN0620	50
3/8-16 x 2-1/4	CBRN0621	50
3/8-16 x 2-1/2	CBRN0622	50
3/8-16 x 3	CBRN0630	50



TORX HEAD BOTTOM RAIL BOLTS - ZINC PLATED		
DESCRIPTION	ITEM #	BOX QTY
3/8-24 X 1	TBH0610	100
3/8-24 X 1	TBH0610B	1500
3/8-24 X 1-1/4	TBH0611	100
3/8-24 X 1-1/4	TBH0611B	1000
3/8-16 X 1-1/4	TBHU0611	100
3/8-16 X 1-1/4	TBHU0611B	1000
3/8-16 X 1-7/8	TBH0617	100



To Order Call: 708-447-4500 or Outside Illinois 800-837-8707

# ELEVATOR, STEP BOLTS & KITS



ELEVATOR BOLTS - Zinc Plated			
LENGTH	1/4-20	5/16-18	3/8-16
1	CBEL0410		
1-1/4	CBEL0411	CBEL0511	CBEL0611
1-1/2	CBEL0412	CBEL0512	CBEL0612
1-3/4	CBEL0413		CBEL0613
2"	CBEL0420	CBEL0520	CBEL0620
2-1/4			CBEL0621
2-1/2	CBEL0422		CBEL0622
3"	CBEL0430		CBEL0630



STEP BOLTS - Zinc Plated			
LENGTH	1/4 - 20	5/16 - 18	3/8 - 16
1	CBST0410	CBST0510	
1-1/4	CBST0411	CBST0511	
1-1/2	CBST0412	CBST0512	CBST0612
2	CBST0420		CBST0620
2-1/2			CBST0622
3-1/2			CBST0632



**CUSTOM PACKAGING AVAILABLE**

PACKAGED KITS QTY 1			
ITEM #	DESCRIPTION	QTY	KIT CONTENTS
KIT06	CROSSMEMBER	8	3/8 - 16 X 1-1/4" RIB NECK CARRIAGE BOLTS GRADE 5
		8	3/8 - 16 FLANGE NUTS
		8	3/8 MYLAR WASHERS
KITTX06	BOTTOM RAIL	8	3/8 - 24 X 1-1/4" TORX BUTTON HEAD SCREWS
		8	3/8 - 24 NYLON LOCK NUTS
KITTXU06	BOTTOM RAIL	8	3/8 - 16 X 1-1/4" TORX BUTTON HEAD SCREWS
		8	3/8 - 16 FLANGE NUTS
KIT1012	LANDING GEAR	10	5/8 - 18 X 1-1/2" CAP SCREWS GRADE 5
		10	5/8 - 18 NYLON LOCK NUTS
KIT0410	1" ELEVATOR BOLTS	100	1/4 X 1" ELEVATOR BOLTS
		100	1/4 - 20 KEP NUTS
KIT0411	1-1/4" ELEVATOR BOLTS	100	1/4 X 1-1/4" ELEVATOR BOLTS
		100	1/4 - 20 KEP NUTS
KIT0412	1-1/2" ELEVATOR BOLTS	100	1/4 X 1-1/2" ELEVATOR BOLTS
		100	1/4 - 20 KEP NUTS
KIT0620	2" ELEVATOR BOLTS	50	3/8 X 2" ELEVATOR BOLTS
		50	3/8 - 16 KEP NUTS
KIT0411ST	1-1/4" STEP BOLTS	100	1/4 - 20 X 1-1/4" STEP BOLTS
		100	1/4 - 20 KEP NUTS
KIT0412ST	1-1/2" STEP BOLTS	100	1/4 - 20 X 1-1/2" STEP BOLTS
		100	1/4 - 20 KEP NUTS
KIT0420ST	2" STEP BOLTS	100	1/4 - 20 X 2" STEP BOLTS
		100	1/4 - 20 KEP NUTS
KITBKMF05	MUDFLAP KIT	8	5/16 - 18 X 1-1/4" G2 CAP SCREW
		8	5/16 - 18 NUTS
		16	5/16 SAE (FINE) FLAT WASHERS

**To Order Call: 708-447-4500 or Outside Illinois 800-837-8707**



# FLOOR & WOOD SCREWS

TORX FLOOR-BOARD SCREWS					
DESCRIPTION	1/4 TORX - FLAT PHOS & OIL	DESCRIPTION	5/16 TORX - FLAT PHOS & OIL	DESCRIPTION	TORX PAN ZINC PLATED
1/4 x 1"	FLST0410	5/16 x 1"	FLST0510	1/4 x 3/4"	FLSTP0403
1/4 x 1-1/4"	FLST0411	5/16 x 1-1/4"	FLST0511	1/4 x 1"	FLSTP0410
1/4 x 1-1/2"	FLST0412	5/16 x 1-1/2"	FLST0512	1/4 x 1-1/2"	FLSTP0412
1/4 x 2"	FLST0420	5/16 x 2"	FLST0520	1/4 x 2"	FLSTP0420
1/4 x 2-1/4"	FLST0421	5/16 x 2-1/4"	FLST0521	1/4 x 2-1/2"	FLSTP0422
1/4 x 2-1/2"	FLST0422	5/16 x 2-1/2"	FLST0522	1/4 x 4"	FLSTP0440
1/4 x 3"	FLST0430	5/16 x 3"	FLST0530	5/16 x 1"	FLSTP0510
1/4 x 3-1/2"	FLST0432	5/16 x 3-1/2"	FLST0532	5/16 x 1-1/4"	FLSTP0511
1/4 x 4"	FLST0440	5/16 x 4"	FLST0540	5/16 x 2"	FLSTP0520
1/4 x 5"	FLST0450	5/16 x 4-3/4"	FLST0543	5/16 x 2-1/2"	FLSTP0522
1/4 x 6"	FLST0460			5/16 x 3"	FLSTP0530
				5/16 x 3-1/2"	FLSTP0532
				5/16 x 4"	FLSTP0540
				3/8 x 1-1/2"	FLSTP0612



FLAT



PAN

Box quantity is 100. Bulk quantities available

FASTENING SYSTEMS FOR THE TRANSPORTATION INDUSTRY			
FASTENING SYSTEMS FOR INTERIOR WOOD LINING			
DESCRIPTION	BOX QTY	ITEM #	PLATING
10 x 3/4" SCI Liner Screw	100	STLPL1003	Zinc/Yellow
10 x 1" SCI Liner Screw	100	STLPL1010	Zinc/Yellow
10 x 1-1/4" SCI Liner Screw	100	STLPL1011	Zinc/Yellow



SCI Liner Screws use #2 square drive apex bit.

PLYWOOD LINING SCREWS - Phillips & Torx Wafer Head Tek Screws - Zinc Plated					
DESCRIPTION	BOX QTY	ITEM #	DESCRIPTION	BOX QTY	ITEM #
10-24 x 3/4" Phillips	100	SMSTKW1003	10 - 16 x 1" Torx	100	SMSTKWT1010
10-24 x 1" Phillips	100	SMSTKW1010	10 - 16 x 1-1/4" Torx	100	SMSTKWT1011
10-24 x 1-1/2" Phillips	100	SMSTKW1012	10 - 16 x 1-1/2" Torx	100	SMSTKWT1012



PHILLIPS FLAT HEAD WOOD SCREWS - Zinc Plated					
DESCRIPTION	BOX QTY	ITEM #	DESCRIPTION	BOX QTY	ITEM #
6 x 3/4"	100	SMSWSPH0603	12 x 1-1/2"	100	SMSWSPH1212
6 x 1"	100	SMSWSPH0610	12 x 2"	100	SMSWSPH1220
6 x 1-1/2"	100	SMSWSPH0612	12 x 3"	100	SMSWSPH1230
8 x 3/4"	100	SMSWSPH0803	14 x 1"	100	SMSWSPH1410
8 x 2"	100	SMSWSPH0820	14 x 1-1/4"	100	SMSWSPH1411
10 x 1"	100	SMSWSPH1010	14 - 1-1/2"	100	SMSWSPH1412
10 x 2"	100	SMSWSPH1020	14 x 2"	100	SMSWSPH1420
10 x 3"	100	SMSWSPH1030	14 x 2-1/2"	100	SMSWSPH1422
12 x 1"	100	SMSWSPH1210	14 x 3"	100	SMSWSPH1430
12 x 1-1/4"	100	SMSWSPH1211	12 x 1"	100	SMSWSPH1210



To Order Call: 708-447-4500 or Outside Illinois 800-837-8707

# SHEET METAL SCREWS

## PHILLIPS PAN HEAD SHEET METAL SCREWS - Zinc Plated

SIZE	BOX QTY	ITEM #	STAINLESS ITEM #	SIZE	BOX QTY	ITEM#	STAINLESS ITEM #
6 x 3/8	100	SMSPH0606	SSSMSPH0606	10 x 1-3/4	100	SMSPH1013	SSSMSPH1013
6 x 1/2	100	SMSPH0602	SSSMSPH0602	10 x 2	100	SMSPH1020	SSSMSPH1020
6 x 5/8	100	SMSPH0605	SSSMSPH0605	10 x 2-1/2	100	SMSPH1022	SSSMSPH1022
6 x 3/4	100	SMSPH0603	SSSMSPH0603	12 x 1/2	100	SMSPH1202	SSSMSPH1202
6 x 1	100	SMSPH0610	SSSMSPH0610	12 x 3/4	100	SMSPH1203	SSSMSPH1203
6 x 1-1/2	100	SMSPH0612	SSSMSPH0612	12 x 1	100	SMSPH1210	SSSMSPH1210
8 x 3/8	100	SMSPH0806	SSSMSPH0806	12 x 1-1/4	100	SMSPH1211	SSSMSPH1211
8 x 1/2	100	SMSPH0802	SSSMSPH0802	12 x 1-1/2	100	SMSPH1212	SSSMSPH1212
8 x 5/8	100	SMSPH0805	SSSMSPH0805	12 x 2	100	SMSPH1220	SSSMSPH1220
8 x 3/4	100	SMSPH0803	SSSMSPH0803	12 x 2-1/2	100	SMSPH1222	SSSMSPH1222
8 x 1	100	SMSPH0810	SSSMSPH0810	14 x 1/2	100	SMSPH1402	SSSMSPH1402
8 x 1-1/2	100	SMSPH0812	SSSMSPH0812	14 x 5/8	100	SMSPH1405	SSSMSPH1405
8 x 2	100	SMSPH0820	SSSMSPH0820	14 x 3/4	100	SMSPH1403	SSSMSPH1403
8 x 3	100	SMSPH0830	SSSMSPH0830	14 x 1	100	SMSPH1410	SSSMSPH1410
10 x 3/8	100	SMSPH1006		14 x 1-1/4	100	SMSPH1411	SSSMSPH1411
10 x 1/2	100	SMSPH1002	SSSMSPH1002	14 x 1-1/2	100	SMSPH1412	SSSMSPH1412
10 x 5/8	100	SMSPH1005	SSSMSPH1005	14 x 1-3/4	100	SMSPH1413	SSSMSPH1413
10 x 3/4	100	SMSPH1003	SSSMSPH1003	14 x 2	100	SMSPH1420	SSSMSPH1420
10 x 1	100	SMSPH1010	SSSMSPH1010	14 x 2-1/2	100	SMSPH1422	SSSMSPH1422
10 x 1-1/4	100	SMSPH1011	SSSMSPH1011	14 x 3	100	SMSPH1430	SSSMSPH1430
10 x 1-1/2	100	SMSPH1012	SSSMSPH1012				



**Additional sizes available** Truss Head and Flat Head also available.

## SLOTTED PAN HEAD SHEET METAL SCREWS - Zinc Plated

SIZE	BOX QTY	ITEM #	STAINLESS ITEM #	SIZE	BOX QTY	ITEM #	STAINLESS ITEM #
6 x 1/2	100	SMSSL0602	SSSMSSL0602	10 x 1-1/2	50	SMSSL1012	SSSMSSL1012
6 x 3/4	100	SMSSL0603	SSSMSSL0603	10 x 2	50	SMSSL1020	SSSMSSL1020
6 x 1	100	SMSSL0610	SSSMSSL0610	12 x 1/2	100	SMSSL1202	SSSMSSL1202
8 x 1/2	100	SMSSL0802	SSSMSSL0802	12 x 3/4	100	SMSSL1203	SSSMSSL1203
8 x 3/4	100	SMSSL0803	SSSMSSL0803	12 x 1	100	SMSSL1210	SSSMSSL1210
8 x 1	100	SMSSL0810	SSSMSSL0810	12 x 1-1/2	50	SMSSL1212	SSSMSSL1212
8 x 1-1/2	100	SMSSL0812	SSSMSSL0812	12 x 2	50	SMSSL1220	SSSMSSL1220
8 x 2	100	SMSSL0820	SSSMSSL0820	14 x 1/2	100	SMSSL1402	SSSMSSL1402
10 x 1/2	100	SMSSL1002	SSSMSSL1002	14 x 3/4	100	SMSSL1403	SSSMSSL1403
10 x 5/8	100	SMSSL1005	SSSMSSL1005	14 x 1	100	SMSSL1410	SSSMSSL1410
10 x 3/4	100	SMSSL1003	SSSMSSL1003	14 x 1-1/2	50	SMSSL1412	SSSMSSL1412
10 x 1	100	SMSSL1010	SSSMSSL1010	14 x 2	50	SMSSL1420	SSSMSSL1420



**Additional sizes available** Truss Head and Flat Head also available.

**To Order Call: 708-447-4500 or Outside Illinois 800-837-8707**





# SHEET METAL SCREWS

HEX HEAD SHEET METAL SCREWS - Zinc Plated							
SIZE	QTY	HEX HEAD ITEM #	SLOTTED HEX WASHER HEAD ITEM #	SIZE	QTY	HEX HEAD ITEM #	SLOTTED HEX WASHER HEAD ITEM #
6 x 1/4	100	SMSHH0601		10 x 3	100	SMSHH1030	SMSHWH1030
6 x 1/2	100	SMSHH0602	SMSHWH0602	12 x 1/2	100	SMSHH1202	SMSHWH1202
6 x 3/4	100	SMSHH0603	SMSHWH0603	12 x 3/4	100	SMSHH1203	SMSHWH1203
6 x 7/8	100	SMSHH0604		12 x 5/8	100	SMSHH1205	
6 x 5/8	100	SMSHH0605		12 x 7/8	100	SMSHH1207	
6 x 3/8	100	SMSHH0606		12 x 1	100	SMSHH1210	SMSHWH1210
6 x 1	100	SMSHH0610	SMSHWH0610	12 x 1-1/4	100	SMSHH1211	SMSHWH1211
6 x 1-1/4	100	SMSHH0611		12 x 1-1/2	100	SMSHH1212	SMSHWH1212
6 x 1-1/2	100	SMSHH0612		12 x 1-3/4	100	SMSHH1213	
6 x 1-3/4	100	SMSHH0613		12 x 2	100	SMSHH1220	
8 x 1/4	100	SMSHH0801		12 x 1-1/2	100	SMSHH1222	
8 x 1/2	100	SMSHH0802	SMSHWH0802	12 x 3	100	SMSHH1230	
8 x 3/4	100	SMSHH0803	SMSHWH0803	14 x 1/2	100	SMSHH1402	SMSHWH1402
8 x 5/8	100	SMSHH0805		14 x 3/4	100	SMSHH1403	SMSHWH1403
8 x 3/8	100	SMSHH0806	SMSHWH0806	14 x 5/8	100	SMSHH1405	
8 x 7/8	100	SMSHH0807		14 x 7/8	100	SMSHH1407	
8 x 1	100	SMSHH0810	SMSHWH0810	14 x 1	100	SMSHH1410	SMSHWH1410
8 x 1-1/4	100	SMSHH0811	SMSHWH0811	14 x 1-1/4	100	SMSHH1411	SMSHWH1411
8 x 1-1/2	100	SMSHH0812	SMSHWH0812	14 x 1-1/2	100	SMSHH1412	SMSHWH1412
8 x 1-3/4	100	SMSHH0813		14 x 1-3/4	100	SMSHH1413	
8 x 2	100	SMSHH0820		14 x 2	100	SMSHH1420	SMSHWH1420
10 x 1/2	100	SMSHH1002	SMSHWH1002	14 x 2-1/2	100	SMSHH1422	SMSHWH1422
10 x 3/4	100	SMSHH1003	SMSHWH1003	14 x 3	100	SMSHH1430	SMSHWH1430
10 x 5/8	100	SMSHH1005		5/16 x 3/4	50	SMSHH1503	SMSHWH1503
10 x 3/8	100	SMSHH1006	SMSHWH1006	5/16 x 1	50	SMSHH1510	SMSHWH1510
10 x 7/8	100	SMSHH1007		5/16 x 1-1/4	50	SMSHH1511	
10 x 1	100	SMSHH1010	SMSHWH1010	5/16 x 1-1/2	50	SMSHH1512	SMSHWH1512
10 x 1-1/4	100	SMSHH1011	SMSHWH1011	5/16 x 2	50	SMSHH1520	SMSHWH1520
10 x 1-1/2	100	SMSHH1012	SMSHWH1012	3/8 x 1	50	SMSHH1610	
10 x 1-3/4	100	SMSHH1013		3/8 x 1-1/4	50	SMSHH1611	
10 x 2	100	SMSHH1020	SMSHWH1020	3/8 x 1-1/2	50	SMSHH1612	
10 x 2-1/2	100	SMSHH1022					



USE WRENCH SIZES AS FOLLOWS: #6 & #8 = 1/4, #10 & #12 = 5/16, #12 = 7/16, 5/16 = 1/2, 3/8 = 9/16  
 DIAMETER MEASURES AS FOLLOWS: #6 = 1/8 #8 = 5/32 #10 = 3/16 #12 = 7/32 #14 = 1/4



ITEM #  
LA119

**The LA119 Pan Assortment contains the following items:**

SMSHH1410, SMSHH1503, SMSHH1510,  
 SMSSL0602, SMSSL0610, SMSSL0612,  
 SMSSL0802, SMSSL0803, SMSSL0810,  
 SMSSL0812, SMSSL1002, SMSSL1003,  
 SMSSL1010, SMSSL1012, SMSSL1202,  
 SMSSL1203, SMSSL1210, SMSSL1212,  
 SMSSL1402, SMSSL1403, SMSSL1410,  
 SMSSL1412



ITEM #  
LA120

**The LA120 Pan Assortment contains the following items:**

SMSHH1403, SMSHH1410, SMSHH1503,  
 SMSHH1510, SMSPH0602, SMSPH0603,  
 SMSPH0610, SMSPH0612, SMSPH0802,  
 SMSPH0803, SMSPH0810, SMSPH0812,  
 SMSPH1002, SMSPH1003, SMSPH1010,  
 SMSPH1012, SMSPH1202, SMSPH1203,  
 SMSPH1210, SMSPH1212, SMSPH1402,  
 SMSPH1403, SMSPH1410, SMSPH1412



To Order Call: 708-447-4500 or Outside Illinois 800-837-8707

# TEK SCREWS

## HEX WASHER HEAD TEK SCREWS - ZINC PLATED



SIZE	BOX QTY	ITEM #	STAINLESS ITEM #	SIZE	BOX QTY	ITEM #	STAINLESS ITEM #
6 x 1/2	100	SMSTKH0602	SSSMSTKH0602	10 x 2	100	SMSTKH1020	
6 x 3/4	100	SMSTKH0603	SSSMSTKH0603	12 x 3/4	100	SMSTKH1203	SSSMSTKH1203
6 x 1	100	SMSTKH0610	SSSMSTKH0610	12 x 1	100	SMSTKH1210	SSSMSTKH1210
8 x 1/2	100	SMSTKH0802	SSSMSTKH0802	12 x 1-1/4	100	SMSTKH1211	
8 x 3/4	100	SMSTKH0803	SSSMSTKH0803	12 x 1-1/2	100	SMSTKH1212	SSSMSTKH1212
8 x 1	100	SMSTKH0810	SSSMSTKH0810	12 x 2	100	SMSTKH1220	SSSMSTKH1220
8 x 1-1/2	100	SMSTKH0812	SSSMSTKH0812	14 x 3/4	100	SMSTKH1403	SSSMSTKH1403
8 x 2	100	SMSTKH0820		14 x 1	100	SMSTKH1410	SSSMSTKH1410
10 x 1/2	100	SMSTKH1002	SSSMSTKH1002	14 x 1-1/2	100	SMSTKH1412	SSSMSTKH1412
10 x 5/8	100	SMSTKH1005	SSSMSTKH1005	14 x 1-3/4	100	SMSTKH1413	
10 x 3/4	100	SMSTKH1003	SSSMSTKH1003	14 x 2	100	SMSTKH1420	SSSMSTKH1420
10 x 1	100	SMSTKH1010	SSSMSTKH1010	14 x 2-1/2	100	SMSTKH1422	
10 x 1-1/4	100	SMSTKH1011		14 x 3	100	SMSTKH1430	
10 x 1-1/2	100	SMSTKH1012	SSSMSTKH1012				

Additional sizes available

## PHILLIPS PAN HEAD TEK SCREWS - ZINC PLATED



DESCRIPTION	BOX QUANTITY	ITEM #	DESCRIPTION	BOX QUANTITY	ITEM #
6 x 1/2	100	SMSTKP0602	10 x 1/2	100	SMSTKP1002
6 x 3/4	100	SMSTKP0603	10 x 5/8	100	SMSTKP1005
6 x 1	100	SMSTKP0610	10 x 3/4	100	SMSTKP1003
8 x 1/2	100	SMSTKP0802	10 x 1	100	SMSTKP1010
8 x 3/4	100	SMSTKP0803	10 x 1-1/2	100	SMSTKP1012
8 x 1	100	SMSTKP0810	14 x 3/4	100	SMSTKP1403
			14 x 1	100	SMSTKP1410

Additional sizes available



ITEM #  
LA142

The LA142 Pan Assortment contains the following items:

SMSTKH0803, SMSTKH0810, SMSTKH1003, SMSTKH1010, SMSTKH1012, SMSTKH1203, SMSTKH1210, SMSTKH1212, SMSTKH1403, SMSTKH1410, SMSTKH1412, SMSTKH1420, SMSTKP0803, SMSTKP0810, SMSTKP1003, SMSTKP1010, SMSTKP1403, SMSTKP1410

## BATTERY & LICENSE PLATE BOLTS



DESCRIPTION	BOX QTY	ITEM #
License Plate Bolts - White Nylon	100	J735
5/16 - 18 x 12 Battery Hold Down Bolts	10	MIB512
5/16 - 18 x 1-3/8 Battery Bolts Packaged with Shoulder Hex Nuts - Plated	50	J861

To Order Call: 708-447-4500 or Outside Illinois 800-837-8707



# OUTDOOR

***We offer Hot Dipped Galvanized, Stainless Steel Fasteners, Nails, Screws & more for all your outdoor needs!!***



*Call for more info*



**To Order Call: 708-447-4500 or Outside Illinois 800-837-8707**

# MACHINE SCREWS



SLOTTED



PHILLIPS



FLAT PHILLIPS

MACHINE SCREWS - Zinc Plated				
DESCRIPTION	BOX QTY	SLOTTED #	PHILLIPS #	FLAT PHILLIPS #
6-32 x 1/2	100	MS063202	MSPH063202	MSPFH063202
6-32 x 3/4	100	MS063203	MSPH063203	MSPFH063203
6-32 x 1	100	MS063210	MSPH063210	MSPFH063210
6-32 x 1-1/2	100	MS063212	MSPH063212	MSPFH063212
8-32 x 1/2	100	MS083202	MSPH083202	MSPFH083202
8-32 x 3/4	100	MS083203	MSPH083203	MSPFH083203
8-32 x 1	100	MS083210	MSPH083210	MSPFH083210
8-32 x 1-1/2	100	MS083212	MSPH083212	MSPFH083212
8-32 x 2	100	MS083220	MSPH083220	MSPFH083220
10-32 x 1/2	100	MS103202	MSPH103202	MSPFH103202
10-32 x 3/4	100	MS103203	MSPH103203	MSPFH103203
10-32 x 1	100	MS103210	MSPH103210	MSPFH103210
10-32 x 1-1/2	100	MS103212	MSPH103212	
10-32 x 2	100	MS103220	MSPH103220	
10-24 x 1/2	100	MS102402	MSPH102402	MSPFH102402
10-24 x 3/4	100	MS102403	MSPH102403	MSPFH102403
10-24 x 1	100	MS102410	MSPH102410	MSPFH102410
10-24 x 1-1/2	100	MS102412	MSPH102412	MSPFH102412
10-24 x 2	100	MS102420	MSPH102420	MSPFH102420
10-24 x 2-1/2	100	MS102422		MSPFH102422
10-24 x 3	100	MS102430		MSPFH102430
1/4-20 x 1/2	100	MS142002	MSPH142002	MSPFH142002
1/4-20 x 3/4	100	MS142003	MSPH142003	MSPFH142003
1/4-20 x 1	100	MS142010	MSPH142010	MSPFH142010
1/4-20 x 1-1/2	100	MS142012	MSPH142012	MSPFH142012
1/4-20 x 2	100	MS142020	MSPH142020	MSPFH142020
1/4-20 x 2-1/2	100	MS142022	MSPH142022	
1/4-20 x 3	100	MS142030	MSPH142030	

*Additional sizes available*



ITEM #  
LA121

The LA121 Pan Assortment contains the following items:	
HNM01, HNM02, HNM03, HNM04,	
HNM05, MS063202, MS063203,	
MS063210, MS083202, MS083203,	
MS102402, MS102403, MS102410,	
MS103202, MS103203, MS103210,	
MS122402, MS122403, MS122410,	
WWM02, WWM03, WWM05	



ITEM #  
LA158

The LA158 Pan Assortment contains the following items:	
HNM01, HNM02, HNM03, HNM04, HNM05,	
MSPH063202, MSPH063203, MSPH063210,	
MSPH083202, MSPH083203, MSPH083210,	
MSPH102402, MSPH102403, MSPH102410,	
MSPH103202, MSPH103203, MSPH103210,	
MSPH122402, MSPH122403, MSPH122410,	
WWM01, WWM02, WWM03, WWM05	

To Order Call: 708-447-4500 or Outside Illinois 800-837-8707



# MACHINE SCREWS

MACHINE SCREWS - Stainless Steel				
DESCRIPTION	BOX QTY	SLOTTED #	PHILLIPS #	FLAT PHILLIPS #
6-32 x 1/2	100	SSMS063202	SSMSPH063202	SSMSPFH063202
6-32 x 3/4	100	SSMS063203	SSMSPH063203	SSMSPFH063202
6-32 x 1	100	SSMS063210	SSMSPH063210	SSMSPFH063210
6-32 x 1-1/2	100	SSMS063212	SSMSPH063212	SSMSPFH063212
8-32 x 1/2	100	SSMS083202	SSMSPH083202	SSMSPFH083202
8-32 x 3/4	100	SSMS083203	SSMSPH083203	SSMSPFH083203
8-32 x 1	100	SSMS083210	SSMSPH083210	SSMSPFH083210
8-32 x 1-1/2	100	SSMS083212	SSMSPH083212	SSMSPFH083212
8-32 x 2	100	SSMS083220	SSMSPH083220	SSMSPFH083220
10-32 x 1/2	100	SSMS103202	SSMSPH103202	
10-32 x 3/4	100	SSMS103203	SSMSPH103203	SSMSPFH103203
10-32 x 1	100	SSMS103210	SSMSPH103210	SSMSPFH103210
10-32 x 1-1/2	100	SSMS103212	SSMSPH103212	SSMSPFH103212
10-32 x 2	100		SSMSPH103220	SSMSPFH103220
10-24 x 1/2	100	SSMS102402	SSMSPH102402	SSMSPFH102402
10-24 x 3/4	100	SSMS102403	SSMSPH102403	SSMSPFH102403
10-24 x 1	100	SSMS102410	SSMSPH102410	SSMSPFH102410
10-24 x 1-1/2	100	SSMS102412	SSMSPH102412	SSMSPFH102412
10-24 x 2	100	SSMS102420	SSMSPH102420	SSMSPFH102420
10-24 x 2-1/2	100	SSMS102422	SSMSPH102422	SSMSPFH102422
10 - 24 x 3	100	SSMS102430	SSMSPH102430	SSMSPFH102430
1/4-20 x 1/2	100	SSMS142002	SSMSPH142002	SSMSPFH142002
1/4-20 x 3/4	100	SSMS142003	SSMSPH142003	SSMSPFH142003
1/4-20 x 1	100	SSMS142010	SSMSPH142010	SSMSPFH142010
1/4-20 x 1-1/2	100	SSMS142012	SSMSPH142012	SSMSPFH142012
1/4-20 x 2	100	SSMS142020	SSMSPH142020	SSMSPFH142020
1/4-20 x 2-1/2	100	SSMS142022	SSMSPH142022	SSMSPFH142022
1/4-20 x 3	100	SSMS142030	SSMSPH142030	SSMSPFH142030



SLOTTED



PHILLIPS



FLAT PHILLIPS

Additional sizes available

THREADED ROD				
3 Foot Lengths - Zinc Plated			3 Foot Lengths - B-7 Hardened Plain	
USS ITEM #	SAE ITEM #	SIZE	USS B7 ITEM #	SAE B7 ITEM #
RODU04	RODS04	1/4	RODB7U04	RODB7S04
RODU05	RODS05	5/16	RODB7U05	RODB7S05
RODU06	RODS06	3/8	RODB7U06	RODB7S06
RODU07	RODS07	7/16	RODB7U07	RODB7S07
RODU08	RODS08	1/2	RODB7U08	RODB7S08
RODU09	RODS09	9/16	RODB7U09	RODB7S09
RODU10	RODS10	5/8	RODB7U10	RODB7S10
RODU12	RODS12	3/4	RODB7U12	RODB7S12
RODU14	RODS14	7/8	RODB7U14	RODB7S14
RODU16	RODS16	1"	RODB7U16	RODB7S16
RODU20		1-1/4		
RODU24		1-1/2		



ZINC PLATED



B-7 PLAIN

Additional lengths are available



To Order Call: 708-447-4500 or Outside Illinois 800-837-8707

# CAMTAINERS



ROUND



ENCAPSULATED



ENCAPSULATED  
BARBED NECK

## CAMTAINER NUTS

DESCRIPTION	ITEM NUMBER	BOX QUANTITY
5/16-18 x 1/2 Std. Round 1" Head Dia. - TX55	CAM89060008	100
5/16-18 Encapsulated White	CAMIN05	100
5/16-18 Encapsulated White-Barbed Neck	CAMIN0502	100
5/16-18 Encapsulated Gray-Barbed Neck	CAMIN0502G	100

## ENCAPSULATED CAMTAINER BOLTS



DESCRIPTION	ITEM NUMBER	BOX QUANTITY
5/16-18 x 7/8 - Encapsulated (gray)	CAMING0507	100
5/16-18 x 7/8 - Encapsulated (white)	CAMINW0507	100
5/16-18 x 1 - Encapsulated (gray)	CAMING0510	100
5/16-18 x 1 - Encapsulated (white)	CAMINW0510	100
5/16-18 x 1-1/4 - Encapsulated (gray)	CAMING0511	100
5/16-18 x 1-1/4 - Encapsulated (white)	CAMINW0511	100



## ROUND HEAD CAMTAINER BOLTS

DESCRIPTION	ITEM NUMBER	BOX QUANTITY
5/16-18 x 7/8 Std. Round Head	CAM88082120	100
5/16-18 x 1 Std. Round Head	CAM88082920	100
5/16-18 x 1-1/4 Std. Round Head	CAM88084160	100



## HEX HEAD CAMTAINER BOLTS

DESCRIPTION	ITEM NUMBER	BOX QUANTITY
5/16-18 x 1-1/8 Hex Washer Head	CAMHHW0511	100

To Order Call: 708-447-4500 or Outside Illinois 800-837-8707



# CONSTRUCTION ANCHORS

## WEDGE-ALL HEAVY DUTY ANCHORS

ITEM #	SIZE
MASWA25134	1/4 X 1-3/4
MASWA25214	1/4 X 2-1/4
MASWA25314	1/4 X 3-1/4
MASWA37214	3/8 X 2-1/4
MASWA37234	3/8 X 2-3/4
MASWA37300	3/8 X 3
MASWA373121	3/8 X 3-1/2
MASWA37334	3/8 X 3-3/4
MASWA37500	3/8 X 5
MASWA37700	3/8 X 7
MASWA50234	1/2 X 2-3/4
MASWA50334	1/2 X 3-3/4
MASWA50414	1/2 X 4-1/4
MASWS1244	1/2-13 X 4-1/2
MASWA50512	1/2 X 5-1/2
MASWA50700	1/2 X 7
MASWA62312	5/8 X 3-1/2
MASWA62412	5/8 X 4-1/2
MASWA62500	5/8 X 5
MASWA62600	5/8 X 6
MASWA62700	5/8 X 7
MASWA75100	3/4 X 10
MASWA75120	3/4 X 12
MASWA75414	3/4 X 4-1/4
MASWA75434	3/4 X 4-3/4
MASWA75512	3/4 X 5-1/2
MASWA75614	3/4 X 6-1/4
MASWA75700	3/4 X 7
MASWA75812	3/4 X 8-1/2
MASWS1244	1/2-13 X 4-1/2
MASWA16000	1 X 6
MASWA19000	1 X 9
MASWA11200	1 X 12
MASWA373344SS	3/8 X 3-3/4 STAINLESS STEEL
MASWA503344SS	1/2 X 3-3/4 STAINLESS STEEL
MASWA756144SS	3/4 X 6-1/4 STAINLESS STEEL
MASWA37500MG	3/8 X 5 GALVANIZED
MASWA50512MG	1/2 X 5-1/2 GALVANIZED
MASWA62500MG	5/8 X 5 GALVANIZED

## EXPANSION SCREW ANCHOR

ITEM #	SIZE
MASESA50	1/2 X 13



## EASY SET ANCHORS

ITEM #	SIZE
MASEZAC25238	1/4 X 2 3/8
MASEZAC37312	3/8 X 3 1/2



## SLEEVE ANCHORS

ITEM #	SIZE
MASL37300H	3/8 X 3 HEX HD
MASL37350H	3/8X3-1/2 HEX HD
MASL37400H	3/8 X 4 HEX HD
MASL50400H	1/2 X 4 HEX HD
MASL50600H	1/2 X 6 HEX HD
MASL62300H	5/8 X 3 HEX HD
MASL62414H	5/8 X 4-1/4 HEX HD
MASL37234PF	3/8 X 2-3/4 PHILLIPS FLAT HD
MASL37400PF	3/8 X 4 PHILLIPS FLAT HD
MASL37500PF	3/8 X 5 PHILLIPS FLAT HD

## DROP IN ANCHORS

ITEM #	SIZE
MASDIA25	1/4
MASDIA37	3/8
MASDIAL37	3/8 LIPPED
MASDIA37S	3/8 SHORTY
MASDIA50	1/2
MASDIAL50	1/2 LIPPED
MASDIA50S	1/2 SHORTY W/ SETTING TOOL
MASDIA62	5/8
MASDIA75	3/4
MASDIAST25	SETTING TOOL 1/4
MASDIA38	SETTING TOOL 3/8
MASDIAST50	SETTING TOOL 1/2
MASDIAST62	SETTING TOOL 5/8



To Order Call: 708-447-4500 or Outside Illinois 800-837-8707

# CONSTRUCTION ANCHORS



## HAMMER SET ANCHORS

ITEM #	SIZE
MASZN25100	1/4 X 1 NAILON ZINC
MASZN25300	1/4 X 3 NAILON ZINC



## PLASTIC WALL ANCHORS

ITEM #	SIZE	DESCRIPTION
MASPSA06	#6-8	PLASTIC SCREW ANCHOR
MASPSA08	#8-10	PLASTIC SCREW ANCHOR
MASPSA10	#10-12	PLASTIC SCREW ANCHOR
MASPSA14	#14-16	PLASTIC SCREW ANCHOR
MASPSAK06	#6-8	PLASTIC SCREW ANCHOR KIT *
MASPSAK08	#8-10	PLASTIC SCREW ANCHOR KIT*
MASPSAK10	#10-12	PLASTIC SCREW ANCHOR KIT *

\*Includes Drill Bit, 100 Screws and 100 Plastic anchors.



## HOLLOW WALL ANCHORS

ITEM #	SIZE	DESCRIPTION
MASHWA12X	1/8	1/16-1/4 GRIP
MASHWA12	1/8	1/8-1/2 GRIP
MASHWA12L	1/8	5/8-7/8 GRIP
MASHWA18S	3/16	1/8-5/8 GRIP
MASHWA18L	3/16	5/8-1 3/16 GRIP
MASHWA25S	1/4	1/8-5/8 GRIP
MASHWA25L	1/4	5/8-1 3/16 GRIP
HOLLOW WALL DRIVE ANCHORS		
MASHWDA12LD	1/8	1/8-3/16 GRIP
MASHWDA12SD	1/8	1/8-1/2 GRIP

## TOGGLE BOLTS WITH SPRING WING

ITEM #	SIZE	DESCRIPTION
MASSWTB12200R	1/8 X 2	ROUND HEAD
MASSWTB12300R	1/8 X 3	ROUND HEAD
MASSWTB18200R	3/16 X 2	ROUND HEAD
MASSWTB18300R	3/16 X 3	ROUND HEAD
MASSWTB18400R	3/16 X 4	ROUND HEAD
MASSWTB18500R	3/16 X 5	ROUND HEAD
MASSWTB25300R	1/4 X 3	ROUND HEAD
MASSWTB25400R	1/4 X 4	ROUND HEAD
MASSWTB25500R	1/4 X 5	ROUND HEAD
MASSWTB37300R	3/8 X 3	ROUND HEAD
MASSWTB37400R	3/8 X 4	ROUND HEAD
MASSWTB37600R	3/8 X 6	ROUND HEAD
MASSWTB12300M	1/8 X 3	MUSHROOM HEAD
MASSWTB18300M	3/16 X 3	MUSHROOM HEAD
MASSWTB18400M	3/16 X 4	MUSHROOM HEAD
MASSWTB25300M	1/4 X 3	MUSHROOM HEAD
MASSWTB25400M	1/4 X 4	MUSHROOM HEAD
TOGGLE WINGS		
MASSWTH25	1/4	TOGGLE WING
MASSWTH31	5/16	TOGGLE WING
MASSWTH37	3/8	TOGGLE WING
MASSWTH50	1/2	TOGGLE WING



For Concrete



For Metal



For Wood

## HANGER MATE QTY. 25

ITEM #	SIZE	DESCRIPTION
MASPFM2211200	1/4 20 X 1 5/8	FOR CONCRETE
MASPFM2231100	1/4-20 X 1	FOR STEEL
MASPFM2231200	1/4-20 X 1-1/2	FOR STEEL
MASPFM2231250	1/4-20 X 3	FOR STEEL
MASPFM2251050	1/4-20 X 1	FOR WOOD
MASPFM2251100	1/4-20 X 2	FOR WOOD
MASPFM2251200	1/4-20 X 3	FOR WOOD
MASPFM2251250	1/4-20 X 4	FOR WOOD

All Are for Vertical 3/8 Rod

To Order Call: 708-447-4500 or Outside Illinois 800-837-8707





# CONSTRUCTION ANCHORS

## HEAVY DUTY TITAN

ITEM #	SIZE
<b>HEAVY DUTY TITEN WITH HEX WASHER HEAD</b>	
MASTHD37400H	3/8 X 4
MASTHD50300H	1/2 X 3
MASTHD50400H	1/2 X 4
MASTHD50500H	1/2 X 5
MASTHD62400H	5/8 X 4
MASTHD62500H	5/8 X 5
MASTHD62600H	5/8 X 6
MASTHD62800H	5/8 X 8
MASTHD75400H	3/4 X 4
MASTHD75500H	3/4 X 5
<b>HEAVY DUTY TITEN HEX HEAD</b>	
MASTTN18114H	3/16 X 1-1/4
MASTTN18134H	3/16 X 1-3/4
MASTTN18214H	3/16 X 2-1/4
MASTTN18234H	3/16 X 2-3/4
MASTTN18314H	3/16 X 3-1/4
MASTTN25114H	1/4 X 1-1/4
MASTTN25134H	1/4 X 1-3/4
MASTTN25214H	1/4 X 2-1/4
MASTTN25234H	1/4 X 2-3/4
MASTTN25314H	1/4 X 3-1/4
MASTTN25334H	1/4 X 3-3/4
MASTTN25400H	1/4 X 4
MASTTN25134PF	3/16 X 1-3/4 PHIL FLAT HD
MASTTN25214PF	3/16 X 2-1/4 PHIL FLAT HD



HEX HEAD



PHILIPS FLAT HEAD



## HSDS PLUS CARBIDE DRILL BITS

ITEM #	SIZE
MASMDBP15500H	5/32 X 5 FOR 3/16 TITEN
MASMDBP15600H	5/32 X 6 FOR 3/16 TITEN
MASMDBP15700H	5/32 X 7 FOR 3/16 TITEN
MASMDBP18500H	3/16 X 5 FOR 1/4 TITEN
MASMDBP18600H	3/16 X 6 FOR 1/4 TITEN
MASMDP03704	3/8 X 6
MASMDP03708	3/8 X 8
MASMDP03710	3/8 X 12-1/4
MASMDP05004	1/2 X 4X 6-1/14
MASMDP05008	1/2 X 8
MASMDP05010	1/2 X 10
MASMDP06206	5/8 X 6
MASMDP06210	5/8 X 10
MASMDP07506	3/4 X 6
MASMDP07508	3/4 X 8
MASMDP07510	3/4 X 10
MASTTNT01	TITEN DRILL BIT DRIVER SET



## SDS PLUS & SDS MAX BITS

ITEM #	DESC.	SIZE
<b>SDS PLUS</b>		
MBO676123000	2 CUTTER	3/8 x 10 x 12
MBO676125000	2 CUTTER	3/8 x 6 x 8
MBO674512000	2 CUTTER	3/8 x 4 x 6
MBO674510000	2 CUTTER	5/16 x 4 x 6
MBO674808000	2 CUTTER	1/4 x 6 x 8
MBO674708000	2 CUTTER	1/4 x 4 x 6
MBO674508000	2 CUTTER	1/4 x 2 x 4
MBO676147000	2 CUTTER	3/16 x 8 x 10
MBO674606000	2 CUTTER	3/16 x 4 x 6
MBO674605000	2 CUTTER	5/32 x 4 x 6
MBO674506000	2 CUTTER	3/16 x 2 x 4
MBO674624000	2 CUTTER	3/4 x 10 x 12
MBO674524000	2 CUTTER	3/4 x 6 x 8
MBO674819000	2 CUTTER	9/16 x 4 x 6
MBO674620000	2 CUTTER	5/8 x 10 x 12
MBO674520000	2 CUTTER	5/8 x 6 x 8
MBO676158000	2 CUTTER	5/8 x 4 x 6
MBO688062000	2 CUTTER	1/2 x 10 x 12
MBO674516000	2 CUTTER	1/2 x 4 x 6
MBO631420420	Cold Chisel	3/4 x 10
MBO631421420	Bull Point Chisel	10"
<b>SDS MAX</b>		
MBO676516000	2 CUTTER	1/2 x 8 x 13
MBO676716000	2 CUTTER	1/2 x 16 x 21
MBO676520000	4 CUTTER	5/8 x 8 x 13
MBO676720000	4 CUTTER	5/8 x 16 x 21
MBO676524000	4 CUTTER	3/4 x 8 x 13
MBO676724000	4 CUTTER	3/4 x 16 x 21
MBO676728000	4 CUTTER	7/8 x 16 x 21
MBO676700000	4 CUTTER	1 x 8 x 13
MBO676900000	4 CUTTER	1 x 16 x 21
MBO676904000	4 CUTTER	1-1/8 x 16 x 21
MBO676908000	4 CUTTER	1-1/4 x 18 x 23
MBO676916000	4 CUTTER	1-1/2 x 18 x 23



2 CUTTER



COLD CHISEL



BULL POINT CHISEL



4 CUTTER



To Order Call: 708-447-4500 or Outside Illinois 800-837-8707

# RETAINING RINGS



"E" STANDARD TYPE RETAINING RING					
SHAFT	BOX QTY	ITEM #	SHAFT	BOX QTY	ITEM #
1/16	100	J4097	5/16	100	J1547
3/32	100	J2711	3/8	100	J4100
1/8	100	J2712	7/16	100	J951
9/64	100	J4098	1/2	100	J2744
5/32	100	J2713	5/8	50	J4101
3/16	100	J4099	3/4	50	J4102
7/32	100	J2717	7/8	50	J4103
1/4	100	J2715	1"	50	J4104



ITEM #  
LA113

**The LA113 Pan Assortment contains the following items:**  
J1547, J2711, J2713, J2715, J2717, J2744, J4097, J4098, J4099, J4100, J4101, J4102, J4103, J4104, J951



External



Internal

EXTERNAL & INTERNAL SNAP RINGS							
SHAFT	BOX QTY	EXT. ITEM #	INT. ITEM #	SHAFT	BOX QTY	EXT. ITEM #	INT. ITEM #
3/16	50	J4112	—	7/8	50	J2771	J2758
1/4	50	J2763	J2750	1"	50	J2772	J2759
9/32	50	J4113	—	1-1/16	50	J4116	J4126
5/16	50	J2764	J2751	1-1/8	50	J2773	J2760
11/32	50	J4114	—	1-3/16	50	J4117	J4127
3/8	50	J2765	J2752	1-1/4	50	J2774	J2761
7/16	50	J2766	J2753	1-5/16	25	J4118	J4128
1/2	50	J2767	J2754	1-3/8	25	J4119	J4129
9/16	50	J2768	J2755	1-7/16	25	J4120	J4130
5/8	50	J2769	J2756	1-1/2	25	J4121	J4131
11/16	50	J4115	J4124	1-5/8	25	J4122	J4132
3/4	50	J2770	J2757	1-3/4	25	J4123	—



ITEM #  
LA114

**The LA114 Pan Assortment contains the following items:**  
J2750, J2751, J2752, J2753, J2754, J2755, J2756, J2757, J2758, J2759, J2760, J2761, J4124, J4126, J4127, J4128, J4129, J4130, J4132,



ITEM #  
LA115

**The LA115 Pan Assortment contains the following items:**  
J2763, J2764, J2765, J2766, J2767, J2768, J2769, J2770, J2771, J2772, J2773, J2774, J4112, J4113, J4114, J4115, J4116, J4117, J4118, J4119, J4120, J4121, J4122, J4123

To Order Call: 708-447-4500 or Outside Illinois 800-837-8707



# REPAIR KITS, STUDS, ETC.

THREAD REPAIR KITS / INSERTS							
SIZE	KIT ITEM #	BOX QTY	INSERT ITEM #	SIZE	KIT ITEM #	BOX QTY	INSERT ITEM #
4-40	MIB33540	10	MIB23543	3/8-16	MIB33060	10	MIB23063
6-32	MIB33560	10	MIB23563	3/8-24	MIB34060	10	MIB24063
8-32	MIB33580	10	MIB23583	7/16-14	MIB33070	10	MIB23073
10-24	MIB33600	10	MIB23603	7/16-20	MIB34070	10	MIB24073
1/4-20	MIB33040	10	MIB23043	1/2-13	MIB33080	10	MIB23083
1/4-28	MIB34040	10	MIB24043	1/2-20	MIB34080	10	MIB24083
5/16-18	MIB33050	10	MIB23053	5/8-11	MIB33100	5	MIB23103
5/16-24	MIB34050	10	MIB24053	3/4-10	MIB33120	5	MIB23123



THREAD REPAIR KITS



INSERTS

Additional sizes available

TRUCK WHEEL STUDS & NUTS		
DESCRIPTION (SIZE)	BOX QTY	ITEM #
3/4-10 x 16 x 2-7/8 Wheel Stud (Dayton Wheel)	25	BWPM35
5/8-11 x 2-3/4 Wheel Stud (Dayton Wheel)	25	BWPM38
3/4-10 x 2-3/4 Wheel Stud (Dayton Wheel)	25	BWPM39
5/8-11 Wheel Nut (Dayton Wheel)	25	BWPM43
3/4-10 Wheel Nut (Dayton Wheel)	25	BWPM45
1-1/8 R.H. Outer Nut (Budd Wheels)	25	BWPM126
1-1/8 L.H. Outer Nut (Budd Wheels)	25	BWPM127
3/4-16 R.H. Inner Nut (Budd Wheels)	25	BWPM128
3/4-16 L.H. Inner Nut (Budd Wheels)	25	BWPM129
3/4-10 x 3-1/8 Wheel Stud	25	BWPM1102
MK39A Brake Shoe Kit W/O Bushings & Anchor Pins	1	GHMK39A
Wheel Stud Setter (3/4"-10)	1	BWPM1179
Wheel Stud Remover (3/4"-10)	1	BWPM1181



WHEEL NUT



OUTER NUT



INNER NUT



WHEEL STUD



BRAKE KIT



REMOVER



SETTER

GLADHANDS AND SEALS		
DESCRIPTION	BOX QTY	ITEM #
Universal Glad Hand with Rubber Seal	1	GHU
Service Glad Hand with Rubber Seal (Blue)	1	GHS
Emergency Glad Hand with Rubber Seal (Red)	1	GHE
Bolt on Service Glad Hand - 37 Degree	1	GH5317
Bolt on Emergency Glad Hand - 37 Degree	1	GH5327
Black Wide Lip Glad Hand Seal	50	BWPM312
Urethane Glad Hand Seal Blue	50	GHBUS
Urethane Glad Hand Seal Red	50	GHRUS
Glad Hand Protector	100	GHP



GHU



GHS



GHE



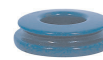
GH5317



BWPM 312



GH5327



GHBUS



GHRUS



GHP

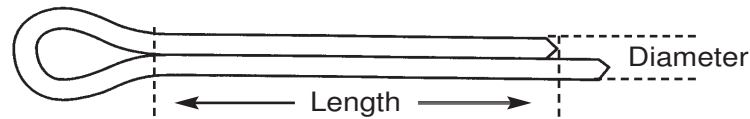


To Order Call: 708-447-4500 or Outside Illinois 800-837-8707

# COTTER PINS

## STEEL COTTER PINS

HOW TO MEASURE  
Point of Contact With Hole



DIAMETER X LENGTH	BOX QTY	ITEM #	DIAMETER X LENGTH	BOX QTY	ITEM #
1/16 x 1/2	500	CP1002	3/16 x 2-1/2	100	CP3022
1/16 x 3/4	500	CP1003	3/16 x 3	100	CP3030
1/16 x 1	500	CP1010	3/16 x 4	100	CP3040
1/16 x 1-1/2	250	CP1012	1/4 x 1	100	CP4010
1/16 x 2	100	CP1020	1/4 x 1-1/2	100	CP4012
7/64 x 1	250	CP1310	1/4 x 2	100	CP4020
7/64 x 1-1/4	250	CP1311	1/4 x 2-1/2	100	CP4022
3/32 x 1/2	250	CP1502	1/4 x 3	100	CP4030
3/32 x 3/4	250	CP1503	1/4 x 3-1/2	100	CP4032
3/32 x 1	250	CP1510	1/4 x 4	100	CP4040
3/32 x 1-1/4	250	CP1511	1/4 x 5	100	CP4050
3/32 x 1-1/2	250	CP1512	1/4 x 6	100	CP4060
3/32 x 2	250	CP1520	5/16 x 2	50	CP5020
1/8 x 1/2	250	CP2002	5/16 x 2-1/2	50	CP5022
1/8 x 3/4	250	CP2003	5/16 x 3	50	CP5030
1/8 x 1	250	CP2010	5/16 x 3-1/2	50	CP5032
1/8 x 1-1/4	250	CP2011	5/16 x 4	50	CP5040
1/8 x 1-1/2	250	CP2012	5/16 x 5	50	CP5050
1/8 x 1-3/4	250	CP2013	5/16 x 6	50	CP5060
1/8 x 2	250	CP2020	3/8 x 1-1/2	50	CP6012
1/8 x 2-1/2	200	CP2022	3/8 x 2	50	CP6020
1/8 x 3	100	CP2030	3/8 x 3	50	CP6030
5/32 x 1	100	CP2510	3/8 x 3-1/2	50	CP6032
5/32 x 1-1/2	100	CP2512	3/8 x 4	50	CP6040
5/32 x 2	100	CP2520	3/8 x 5	50	CP6050
5/32 x 2-1/2	100	CP2522	3/8 x 6	50	CP6060
5/32 x 3	100	CP2530	7/16 x 5	25	CP7050
5/32 x 3-1/2	100	CP2532	7/16 x 6	25	CP7060
3/16 x 1	100	CP3010	1/2 x 3	25	CP8030
3/16 x 1-1/2	100	CP3012	1/2 x 4	25	CP8040
3/16 x 2	100	CP3020	1/2 x 5	25	CP8050
			1/2 x 6	25	CP8060

ITEM #  
LA112



**The LA112 Pan Assortment  
contains the following items:**

CP1010, CP1012, CP1510, CP1520,  
CP2012, CP2022, CP2512, CP2522,  
CP3020, CP3030, CP4020, CP4030

To Order Call: 708-447-4500 or Outside Illinois 800-837-8707



# CLEVIS PINS, ROOFING NAILS



UNIVERSAL CLEVIS PINS		
SIZE	BOX QTY	ITEM #
1/4 x 1-1/2	10	PIN0412
1/4 x 2	10	PIN0420
5/16 x 2	10	PIN0520
1/2 x 2	10	PIN0820

CLEVIS PINS		
SIZE	BOX QTY	ITEM #
3/16 x 1-1/2	10	PIN0312
1/4 x 1-1/2	10	PIN0412S
3/8 x 1-1/2	10	PIN0612
3/8 x 2	10	PIN0620
3/8 x 3	10	PIN0630
7/16 x 2	10	PIN0720
1/2 x 1-1/2	10	PIN0812
1/2 x 1-3/4	10	PIN0813
5/8 x 3	10	PIN01030
3/4 x 3	10	PIN01230



TENSION "ROLL" PINS - High Carbon Steel					
SIZE	BOX QTY	ITEM #	SIZE	BOX QTY	ITEM #
1/16 x 1/4	100	J2720	5/32 x 1/2	100	J2732
1/16 x 1/2	100	J2721	5/32 x 1	100	J2733
1/16 x 3/4	100	J2722	5/32 x 1-1/2	100	J2734
5/64 x 1/2	100	J2724	3/16 x 1/2	50	J2735
5/64 x 3/4	100	J2725	3/16 x 1	50	J2736
3/32 x 1/4	100	J2726	3/16 x 2	50	J2737
3/32 x 3/4	100	J2727	7/32 x 3/4	50	J2738
3/32 x 1	100	J2728	7/32 x 1-1/2	50	J2739
1/8 x 3/8	100	J2729	7/32 x 2	50	J2740
1/8 x 3/4	100	J2730	1/4 x 1	50	J2741
1/8 x 1-1/2	100	J2731	1/4 x 2	50	J2742
			1/4 x 3	50	J2743



ITEM #  
LA117

**The LA117 Pan Assortment contains the following items:**

J2727, J2731, J2736, J2738, J2739,  
J4581, J4583, J4586, J4591, J4593,  
J4598, J4602, J4616, J4618, J4619,  
J4624, J4628, J4630, J4639, J4641,  
J4652, J4654, J4659, J4660

SPRING CENTER BOLTS - S.A.E. Fillister Head					
SIZE	BOX QTY	ITEM #	SIZE	BOX QTY	ITEM #
3/8 x 6	10	J3206	1/2 x 10	10	J3217
7/16 x 10	10	J3212	1/2 x 12	10	J3218



ROOFING NAILS - GALVANIZED		
ITEM #	DESCRIPTION	QTY
MIAGN	1-1/2" GAL NAILS	1 LB
MIAGN2	2" GAL NAILS	1 LB
MIAGN3	3" GAL NAILS	1 LB
MIAGNB	1-1/2" GAL NAILS	50 LB



To Order Call: 708-447-4500 or Outside Illinois 800-837-8707